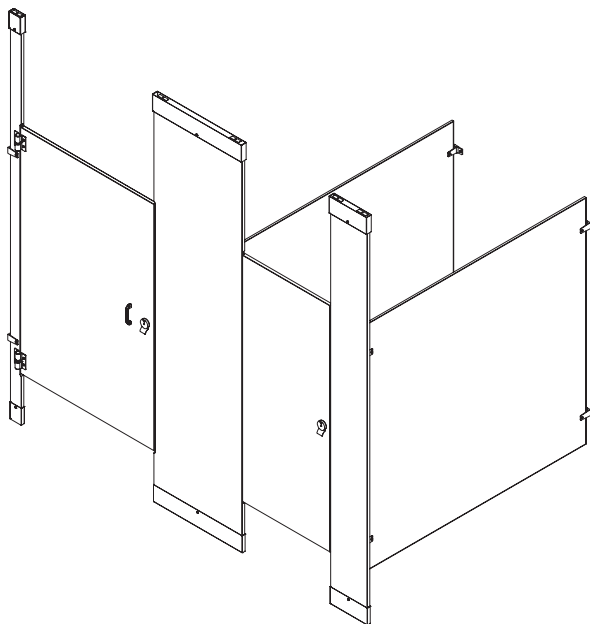


# Installation

## Phenolic Privacy Restroom Partitions, Floor-to-Ceiling – Series 700



### For Standard Height Doors and Panels Only

### Table of Contents

|  |       |
|--|-------|
| Safety Information .....                               | 2     |
| Supplies Required .....                                | 3     |
| Hardware Provided .....                                | 3     |
| Example of Submittal Drawing.....                      | 3     |
| Door Descriptions & Part Numbers .....                 | 4     |
| Pilaster Descriptions & Part Numbers .....             | 5     |
| Pilaster Configurations & Part Numbers .....           | 6     |
| Pilaster Configurations & Wall Hung Part Numbers ..... | 7     |
| Layout Dimensions for Brackets .....                   | 8–9   |
| Mounting Brackets to Wall .....                        | 10    |
| Leveling Screws to Pilaster .....                      | 11    |
| Mounting Brackets to Pilaster .....                    | 12–13 |
| Pilaster Mounting Hardware .....                       | 13–14 |
| Pilasters and Panels .....                             | 15–16 |
| Wall-Hung Pilasters .....                              | 17–18 |
| Pilaster Shoes .....                                   | 19    |
| Hinges .....   | 20–21 |
| Door Hardware.....                                     | 22–27 |
| Urinal Screens.....                                    | 28–29 |



**Read the instructions in this manual before beginning installation. Save these instructions and refer to them for inspection, maintenance, and troubleshooting information.**

For questions regarding the operation, installation or maintenance of this product, visit [bradleycorp.com](http://bradleycorp.com) or call 800.BRADLEY (800.272.3539).

Product warranties and parts information may also be found on our website at [bradleycorp.com](http://bradleycorp.com).



## Safety Information

### Warning

Before beginning installation, make sure that the wall and floor backing are adequate to support the secure mounting of the toilet compartment units.

Partitions are extremely heavy and may require more than one person to position and install.

Failure to comply with these instructions may result in personal injury and/or property damage and will void the partition warranty.

### Caution

Personal protective equipment (PPE) is required during the installation and maintenance of this product.

### Notice

To prevent warping, always lay the material flat. Do not lean the material against the wall or stack unevenly.

Make sure all floors and walls are clean and smooth. Remove loose impediments, such as protruding nails and other debris which could affect installation.

To minimize break-out, always use a support block when drilling through the material.

Carefully remove components from skid, do not drag.

### Important

Review your partition layout drawings and verify the number of stalls and components before beginning installation. All components are labeled with their corresponding part number. Descriptions and part numbers for doors, pilasters, and pilaster configurations are listed on pages 4–7 for easy identification.

Read this installation manual completely to ensure proper installation, then file it with the owner or maintenance department.

This installation manual provides instruction for the assembly of normal partition configurations and standard components.

Non-standard configurations or components including but not limited to curved or angled walls, partial walls, oversized panels, or modified hardware are not covered in this manual. Compliance and conformity to local codes and ordinances is the responsibility of the installer.

Separate parts from packaging and make sure all parts are accounted for before discarding packaging material. If any parts are missing, do not begin installation until you obtain the missing parts.

## Supplies Required

- Chalk line and pencil
- Tape measure and 4' level
- Jigsaw (or hacksaw) and circular saw
- Two spring clamps
- 9/64", 11/64", 15/64", 1/4", and 17/64" drill bits
- Power drill or screw gun with drill bit extension
- 5/16" ceramic tile and masonry drill bit
- Hammer drill
- Spacer, 12" (305) high and strong enough to support weight of panel, and 1/8" (3) for gap between door and pilaster
- Isopropyl alcohol

## Hardware Provided



9/32" x 5/8"  
Washer Flat  
P10-449



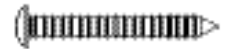
5/16" x 1-1/2"  
Hex Head  
Lag Screw  
FAST-S008



#14-16 Plastic  
Anchor  
FAST-T373



#10-12 x 1"  
Plastic Anchor  
FAST-T381



#14 x 2"  
Button-Head  
Sheet Metal Screw  
Torx-T27 Drive  
FAST-P002



#14 x 5/8"  
Button-Head  
Sheet Metal Screw  
Torx-T27 Drive  
FAST-S0016



#10 x 5/8"  
Button-Head  
Sheet Metal Screw  
Torx-T27 Drive  
FAST-S0019



#10 x 1"  
Button-Head  
Sheet Metal Screw  
Torx-T27 Drive  
FAST-S0028



#10 x 2"  
Flat-Head  
Sheet Metal Screw  
Torx-T25 Drive  
FAST-S0046



#10-24 x 3/8"  
Button-Head  
Machine Screw  
Torx-T27 Drive  
FAST-S0015



#10-24 x 1/2"  
Button-Head  
Machine Screw  
Torx-T27 Drive  
FAST-S0018



#10-24 x 3/4"  
Button-Head  
Shoulder Screw  
Torx-T27 Drive  
FAST-P004



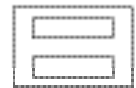
#10 x 1 1/2"  
Button-Head  
Cap Screw  
Torx-T27 Drive  
FAST-S0045



#10-24 x 1/2"  
Button-Head  
Barrel Nut  
Torx-T27 Drive  
FAST-S0017



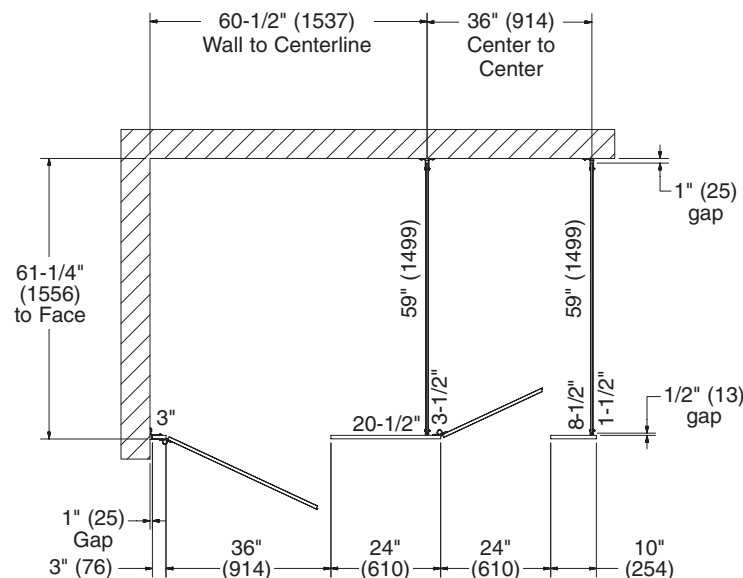
#10-24 x 2"  
Flat-Head  
Machine Screw  
Torx-T25 Drive  
FAST-S0027



Vibration  
Dampening Strip,  
.065 x .250 x 1",  
2 Strip Set  
HDWC-00566-58

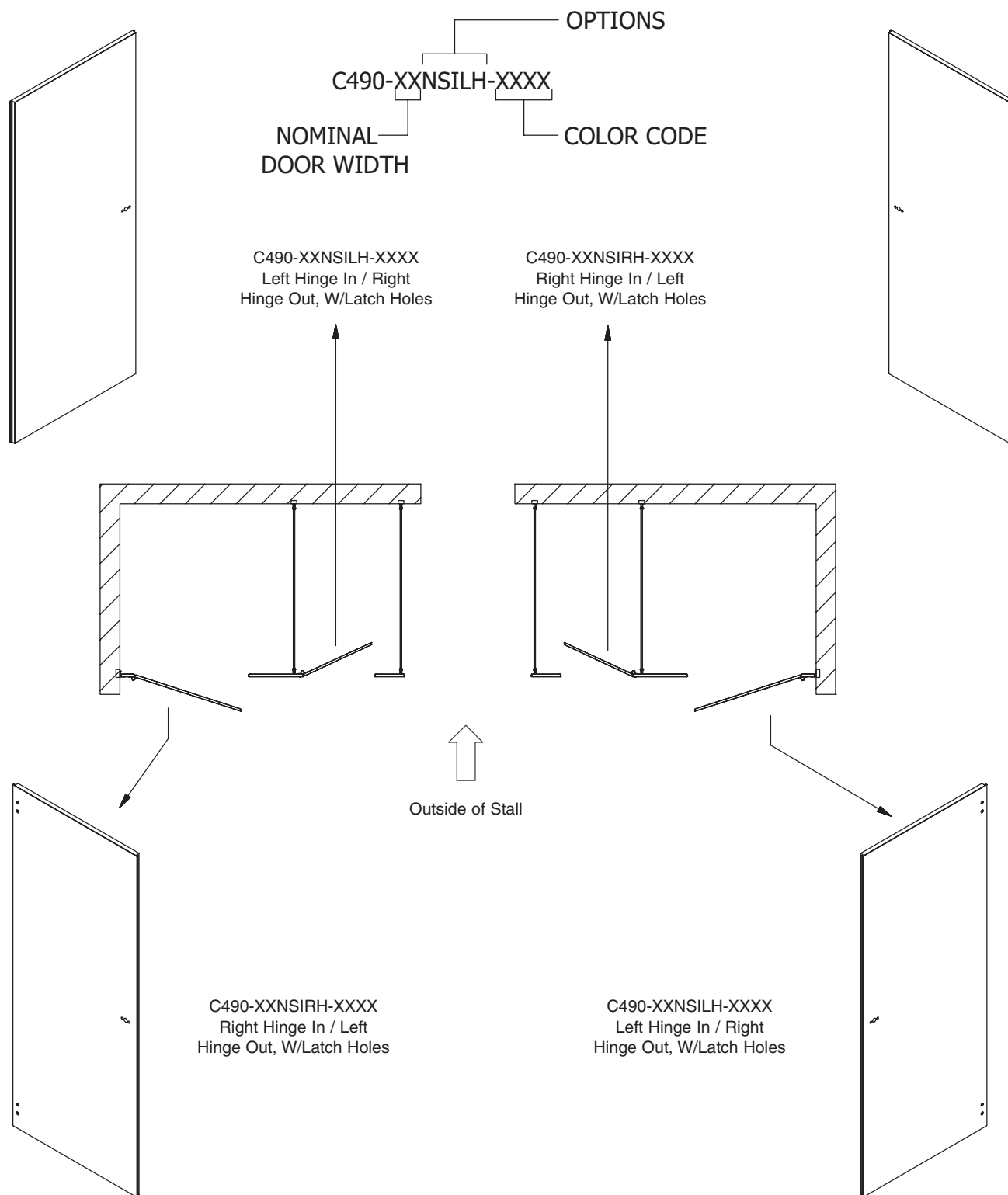
## Example of Submittal Drawing

(mm)



## Door Descriptions & Part Numbers

- ✓ Part number logic and descriptions for doors are based on in-swinging doors. The door swing and handedness is determined by facing the stall from the outside.
- ✓ RH indicates right-hand inswing or left-hand outswing. LH indicates left-hand inswing or right-hand outswing.
- ✓ Phenolic privacy doors come with pre-installed inserts for attaching the hinges.



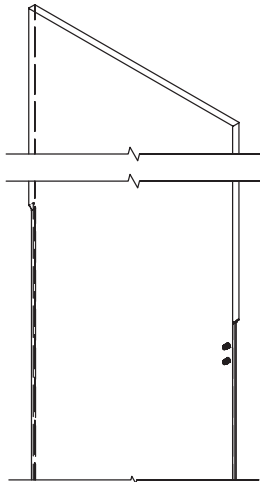
## Pilaster Descriptions & Part Numbers



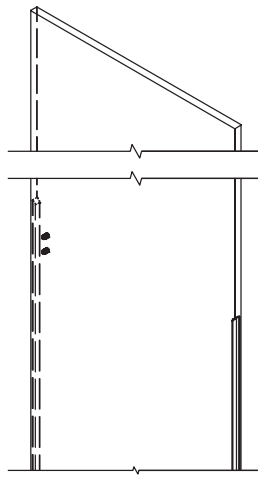
Part number logic and descriptions for pilasters are based on in-swinging doors. The pilaster handedness is based off of the door hinge/latch, as determined by facing the stall from the outside.



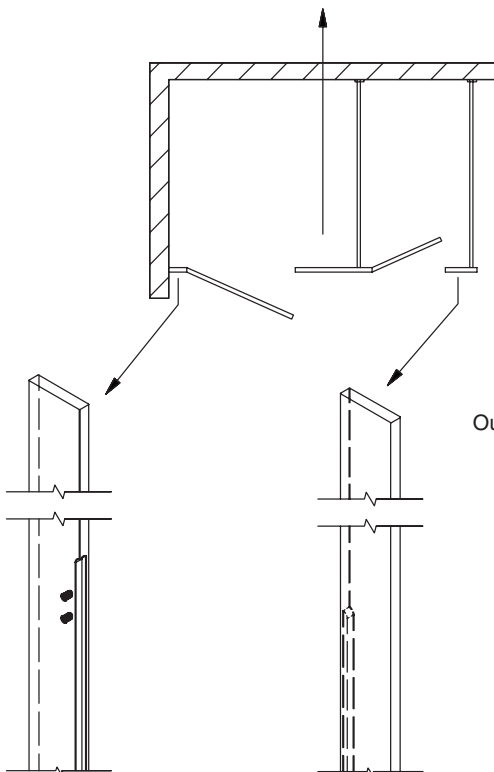
Phenolic privacy pilasters come with pre-installed inserts for attaching the hinges (where applicable).



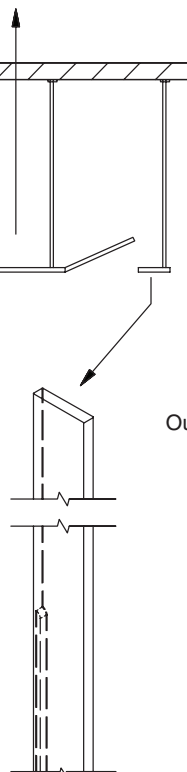
C7XXX-XXNSIAH-XXXX  
No-Site, Left Latch Out &  
Left Hinge In /  
Right Hinge Out &  
Right Latch In



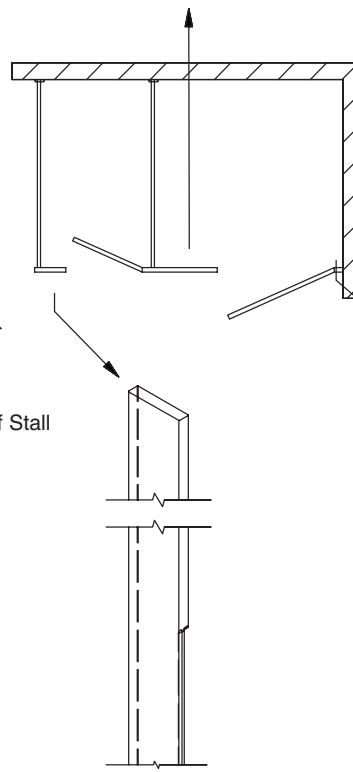
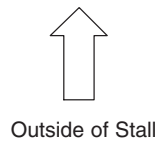
C7XXX-XXNSIBH-XXXX  
No-Site, Right Hinge In &  
Right Latch Out /  
Left Latch In &  
Left Hinge Out



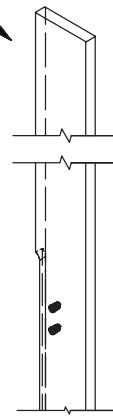
C7XXX-XXNIWRH-XXXX  
No-Site Wall,  
Right Hinge In /  
Left Hinge Out



C7XXX-XXNSALH-XXXX  
No-Site Alcove,  
Left Latch In /  
Right Latch Out



C7XXX-XXNSARH-XXXX  
No-Site Alcove,  
Right Latch In /  
Left Latch Out



C7XXX-XXNIWLH-XXXX  
No-Site Wall,  
Left Hinge In /  
Right Hinge Out

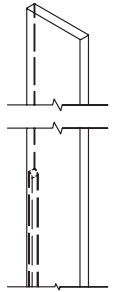
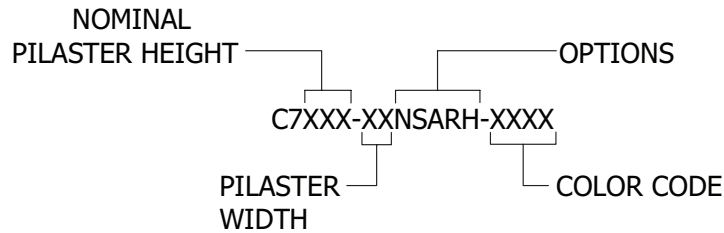
## Pilaster Configurations & Part Numbers



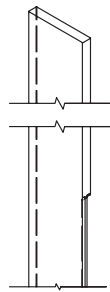
Part number logic and descriptions for pilasters are based on in-swinging doors. Pilaster orientation is shown as inswing in the following illustration. The pilaster handedness is based off of the door hinge/latch, as determined by facing the stall from the outside.



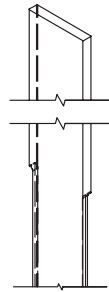
Phenolic privacy pilasters come with pre-installed inserts for attaching the hinges (where applicable).



C7XXX-XXNSALH-XXXX  
No-Site Alcove,  
Left Latch In /  
Right Latch Out



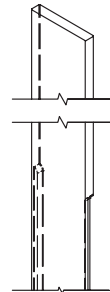
C7XXX-XXNSARH-XXXX  
No-Site Alcove,  
Right Latch In /  
Left Latch Out



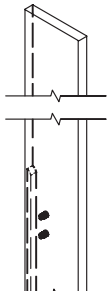
C7XXX-XXNSRH-XXXX  
No-Site, Left Latch  
Out & Right Latch In



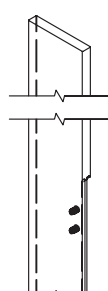
C7XXX-XXNSLH-XXXX  
No-Site, Left Latch In &  
Right Latch Out



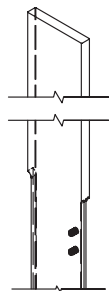
C7XXX-XXNS-XXXX  
No-Site, Left Latch In &  
Right Latch In / Left Latch  
Out & Right Latch Out



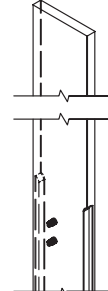
C7XXX-XXNIWRH-XXXX  
No-Site Wall,  
Right Hinge In /  
Left Hinge Out



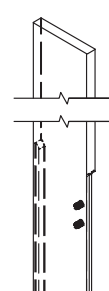
C7XXX-XXNIWLH-XXXX  
No-Site Wall,  
Left Hinge In /  
Right Hinge Out



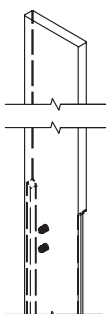
C7XXX-XXNSIAH-XXXX  
No-Site, Left Latch Out &  
Left Hinge In / Right Hinge  
Out & Right Latch In



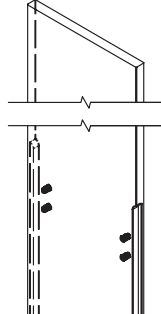
C7XXX-XXNSIBH-XXXX  
No-Site, Right Hinge In &  
Right Latch Out / Left Latch  
In & Left Hinge Out



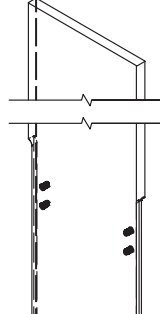
C7XXX-XXNSILH-XXXX  
No-Site, Left Latch In &  
Left Hinge In / Right Hinge  
Out & Right Latch Out



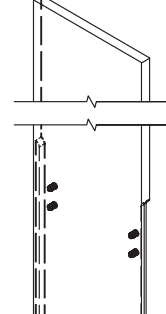
C7XXX-XXNSIRH-XXXX  
No-Site, Right Hinge In &  
Right Latch In / Left Latch Out  
& Left Hinge Out



C7XXX-XXNI2RH-XXXX  
No-Site, Right Hinge In  
& Left Hinge Out



C7XXX-XXNI2LH-XXXX  
No-Site, Right Hinge Out  
& Left Hinge In



C7XXX-XXNI2CH-XXXX  
No-Site, Right Hinge In &  
Left Hinge In / Right Hinge  
Out & Left Hinge Out

## Pilaster Configurations & Wall Hung Part Numbers



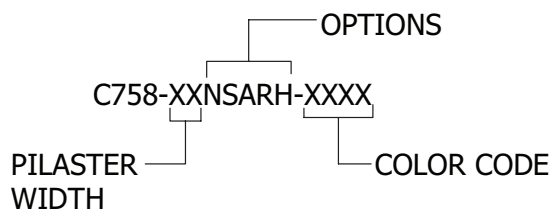
Part number logic and descriptions for pilasters are based on in-swinging doors. Pilaster orientation is shown as inswing in the following illustration. The pilaster handedness is based off of the door hinge/latch, as determined by facing the stall from the outside.



RH indicates right-hand inswing or left-hand outswing. LH indicates left-hand inswing or right-hand outswing.



Phenolic privacy pilasters come with pre-installed inserts for attaching the hinges (where applicable).



C758-XXNSALH-XXXX  
No-Site Alcove,  
Left Latch In /  
Right Latch Out



C758-XXNSARH-XXXX  
No-Site Alcove,  
Right Latch In /  
Left Latch Out



C758-XXNIWRH-XXXX  
No-Site Wall,  
Right Hinge In /  
Left Hinge Out



C758-XXNIWLH-XXXX  
No-Site Wall,  
Left Hinge In /  
Right Hinge Out

# 1 Layout Dimensions - Stirrup Brackets (Standard)



When installing the partition components, consult the applicable Mills Partition submittal drawing for compartment layout dimensions.

## A

**Pilaster Centerline:** Measure from the back wall forward to the face of the compartment, subtract 3/8" (10) and mark this location on the floor ("A"). Mark the same measurement on the opposite end of your layout ("A1") and draw a straight line connecting both marks.

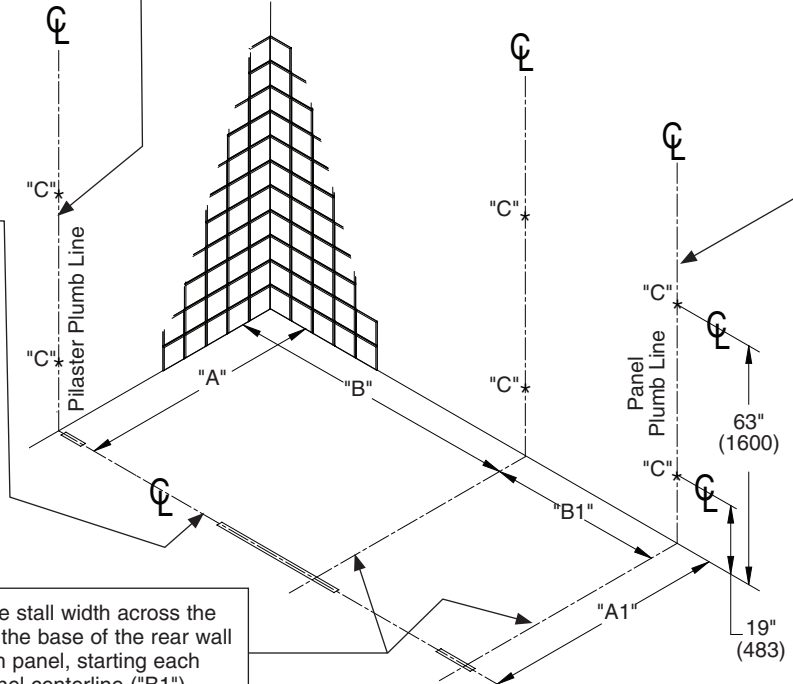
**For Freestanding (FS) Partitions:** Refer to submittal drawings and determine the approximate location of the outside panels. Establish dimensions "A" and "A1" as explained above.

## B

**Panel Centerline:** Measure the stall width across the back wall and place a mark at the base of the rear wall ("B"). Repeat this step for each panel, starting each measurement from the last panel centerline ("B1").

## C

Draw a plumb line on all walls from each pilaster and panel centerline. From the highest point in the room, measure 19" (483) and 63" (1600) from the floor and place a mark on the pilaster/panel plumb line. These marks represent the hole center line of the stirrup brackets. Use a level to transfer that mark to all other plumb lines ("C").



# 1a Layout Dimensions - 3 Stirrup Brackets (Optional)



When installing the partition components, consult the applicable Mills Partition submittal drawing for compartment layout dimensions.

## A

**Pilaster Centerline:** Measure from the back wall forward to the face of the compartment, subtract 3/8" (10) and mark this location on the floor ("A"). Mark the same measurement on the opposite end of your layout ("A1") and draw a straight line connecting both marks.

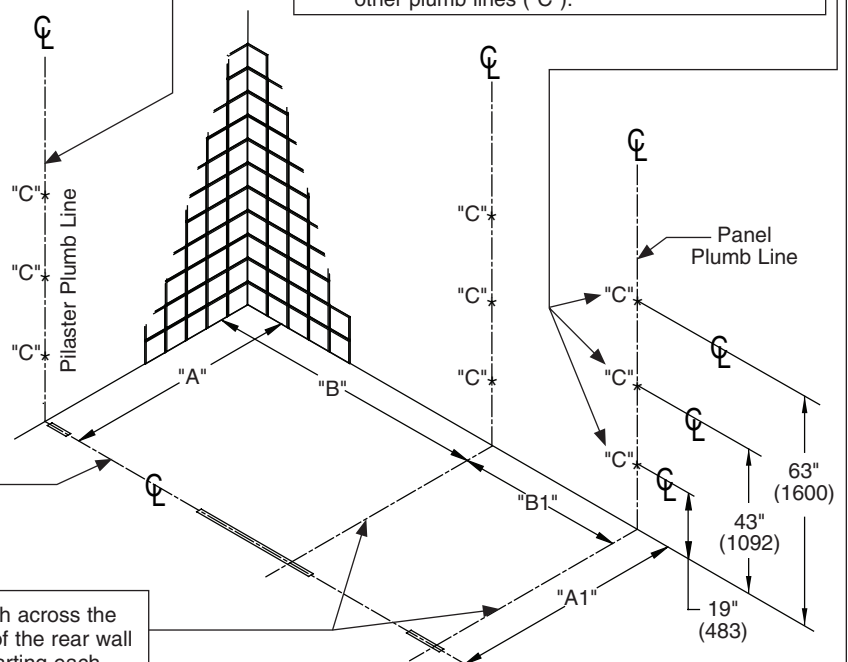
**For Freestanding (FS) Partitions:** Refer to submittal drawings and determine the approximate location of the outside panels. Establish dimensions "A" and "A1" as explained above.

## B

**Panel Centerline:** Measure the stall width across the back wall and place a mark at the base of the rear wall ("B"). Repeat this step for each panel, starting each measurement from the last panel centerline ("B1").

## C

Draw a plumb line on all walls from each pilaster and panel centerline. From the highest point in the room, measure 19" (483), 43" (1092) and 63" (1600) from the floor and place a mark on the pilaster/panel plumb line. These marks represent the hole center line of the stirrup brackets. Use a level to transfer that mark to all other plumb lines ("C").





## 1b Layout Dimensions - Continuous Brackets (Optional)



When installing the partition components, consult the applicable Mills Partition submittal drawing for compartment layout dimensions.

### A

**Pilaster Centerline:** Measure from the back wall forward to the face of the compartment, subtract 3/8" (10) and mark this location on the floor ("A"). Mark the same measurement on the opposite end of your layout ("A1") and draw a straight line connecting both marks.

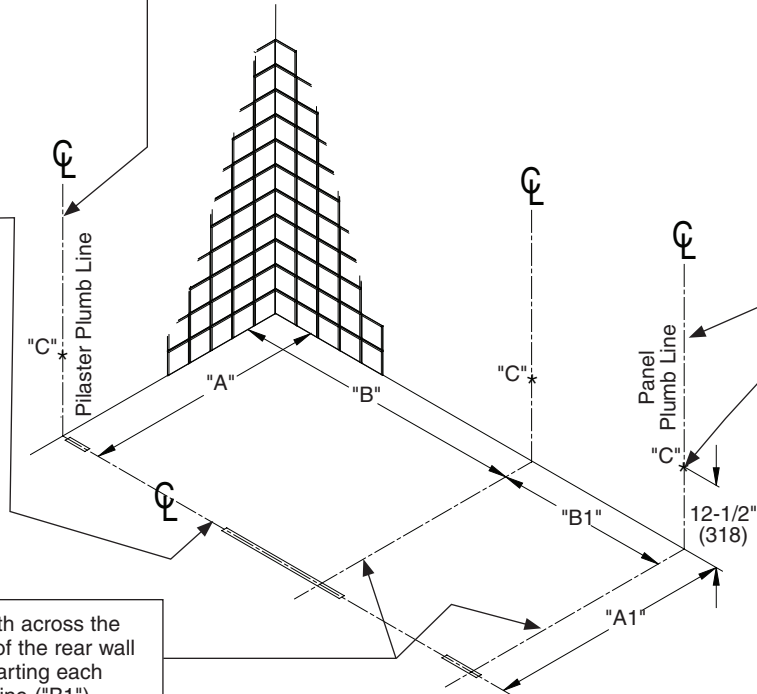
**For Freestanding (FS) Partitions:** Refer to submittal drawings and determine the approximate location of the outside panels. Establish dimensions "A" and "A1" as explained above.

### B

**Panel Centerline:** Measure the stall width across the back wall and place a mark at the base of the rear wall ("B"). Repeat this step for each panel, starting each measurement from the last panel centerline ("B1").

### C

Draw a plumb line on all walls from each pilaster and panel centerline. From the highest point in the room, measure from the floor and place a mark on the pilaster/panel plumb line at 12-1/2" (318). Use a level to transfer that mark to all other plumb lines ("C").



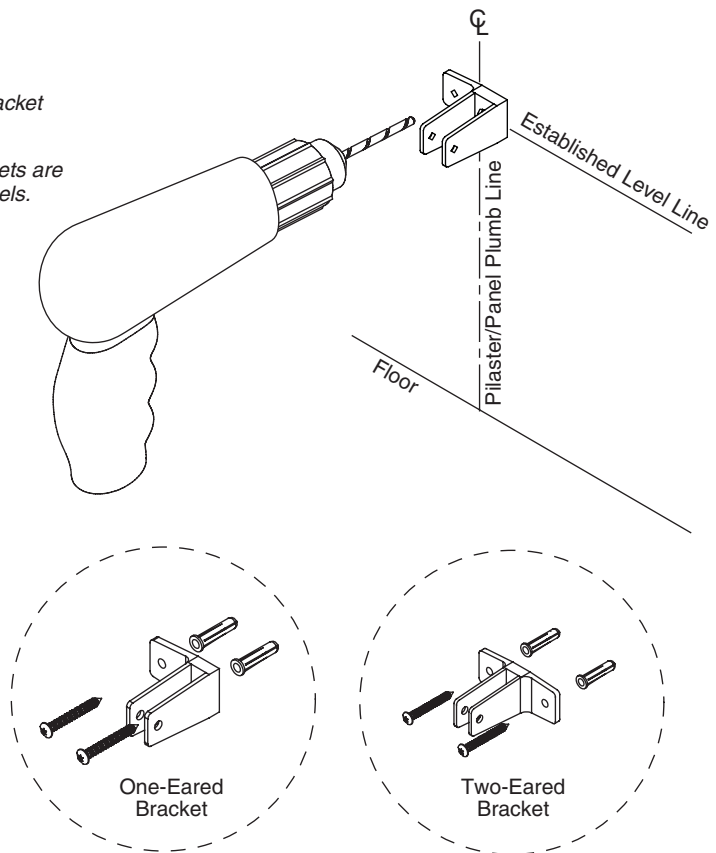
## 2 Stirrup Brackets to Wall (Standard)

- ✓ On end panel and pilaster applications, position the bracket with the ear facing toward the inside of the stall.
- ✓ Pilaster bracket is shown here. 3/4" (19) opening brackets are for pilasters and 1/2" (13) opening brackets are for panels.

**A** Place the center of each stirrup bracket at the established level line. Center the bracket opening on the pilaster/panel plumb line.

**B** Using the bracket as a template, mark the hole locations on the wall. Remove the bracket and drill a Ø5/16" hole (min. 2" (51) deep) at each hole location.

**C** Insert the plastic anchors in all holes and secure the brackets to the wall with the #14 x 2" screws provided.



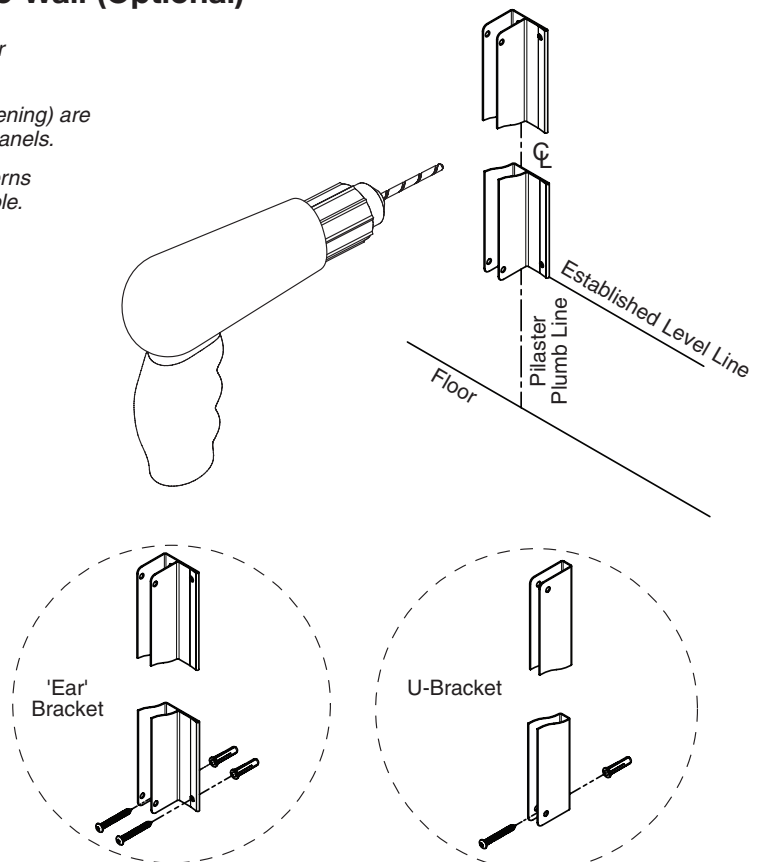
## 2a Continuous Stainless Steel Brackets to Wall (Optional)

- ✓ On pilaster applications, position the bracket with the ear facing toward the inside of the stall.
- ✓ Pilaster bracket shown here; 'Ear' brackets (3/4" (19) opening) are for pilasters and U-brackets (1/2" (13) opening) are for panels.
- ✓ Brackets are used as templates, but since the hole patterns may be different, the brackets may not be interchangeable.

**A** Place the bottom of each continuous bracket at the established level line. Center the bracket opening on the pilaster/panel plumb line.

**B** Using the bracket as a template, mark the hole locations on the wall. Remove the bracket and drill a Ø5/16" hole (min. 2" (51) deep) at each hole location.

**C** Insert the plastic anchors in all holes and secure the brackets to the wall with the #14 x 2" screws provided.



### 3 Leveling Screws to Pilaster



A notch will be present on one end of the pilaster to indicate that it is the bottom.

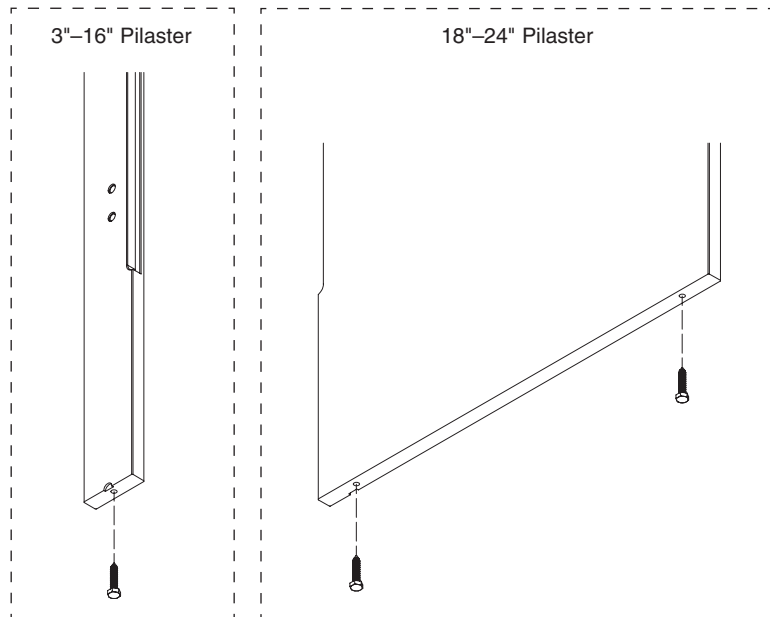
**A**

**3"-16" Pilaster:** Center and drill a  $\text{Ø}17/64$ " pilot hole, 1-1/2" (38) deep.

**18"-24" Pilaster:** Drill (2)  $\text{Ø}17/64$ " pilot holes, 1-1/2" (38) deep. Holes should be 2" (51) off each end of the pilaster.

**B**

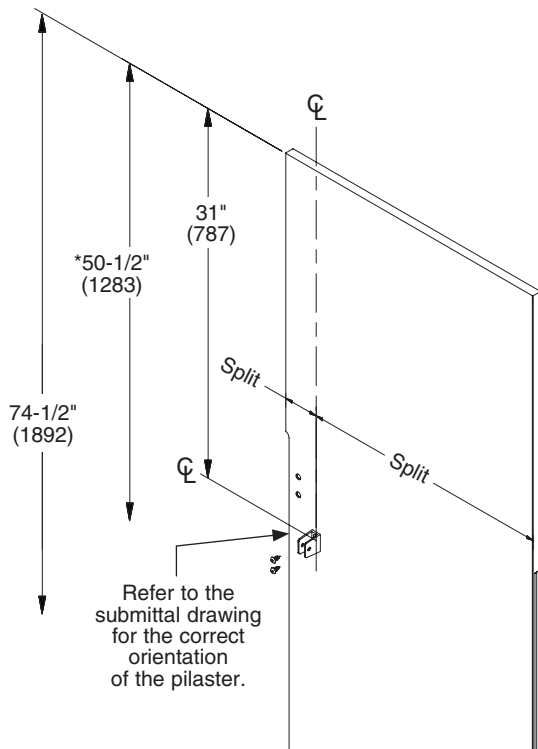
Use leveling screw(s) to adjust height of pilaster.



#### 4 Stirrup Brackets to Pilaster (Standard) and 3-Stirrup Brackets to Pilaster (Optional)



Refer to the submittal drawing to locate the split dimension and layout location of each marked pilaster.



**8' Ceiling:** Measure down from the top of the pilaster and place a mark on the pilaster split centerline at the dimensions shown for the respective bracket.



**For ceiling heights other than 8':** add or subtract the appropriate amount to the dimensions shown. For example, a 9' ceiling would add 12" (305) to each dimension.



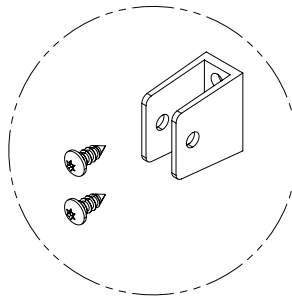
Pilaster shown is for reference only. Actual pilaster varies depending on application.



Place stirrup brackets at each established level line. Center the bracket opening on the pilaster split centerline. Using the bracket as a template, mark the hole locations on the pilaster. Remove the bracket and drill a Ø15/64" pilot hole, 5/8" (16) deep at each location.



Secure the stirrup brackets to the pilasters using the #14 x 5/8" screws provided.



\* For third stirrup bracket option only.

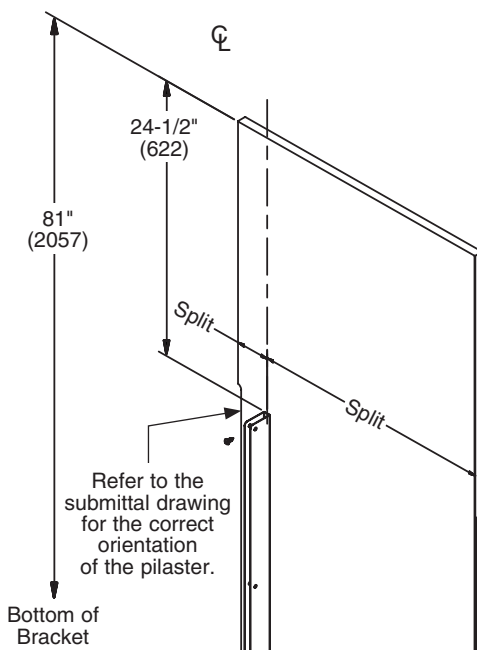
#### 4a Continuous Brackets to Pilaster (Optional)



Refer to the submittal drawing to locate the split dimension and layout location of each marked pilaster.



Brackets are used as templates, but since the hole patterns may be different, the brackets may not be interchangeable.



**8' Ceiling:** Measure down from the top of each pilaster and place a mark on the pilaster split centerline at dimensions shown for the respective bracket.



**For ceiling heights other than 8':** add or subtract the appropriate amount to the dimensions shown. For example, a 9' ceiling would add 12" (305) to each dimension.



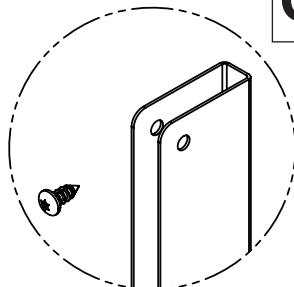
Pilaster shown is for reference only. Actual pilaster varies depending on application.



Place the continuous bracket between each established level line. Center the bracket opening on the pilaster split centerline. Using the bracket as a template, mark the hole locations on the pilaster. Remove the bracket and drill a Ø15/64" pilot hole, 5/8" (16) deep at each location.



Secure the continuous bracket to the pilasters using the #14 x 5/8" screws provided.



#### 4b Stirrup Alcove Brackets to Pilaster (Standard) and 3-Stirrup Alcove Brackets or Continuous Alcove Brackets to Pilaster (Optional)



Continuous stainless steel brackets use continuous alcove brackets.



Refer to the submittal drawing for the layout location of each alcove pilaster.

**8' Ceiling:** Measure down from the top of the pilaster and place a mark at dimensions shown for the respective bracket situation.

**A** For ceiling heights other than 8': add or subtract the appropriate amount to the dimensions shown. For example, a 9' ceiling would add 12" (305) to each dimension.

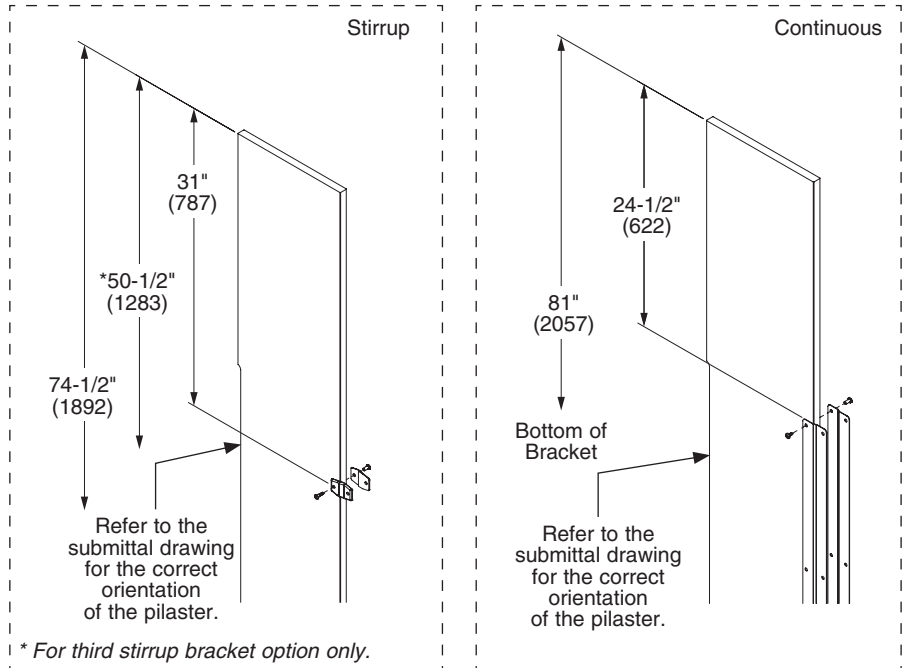
**B** **Stirrup:** Position the center of each bracket at the marks made in Step A.

**Continuous:** Center the bracket between each mark made in Step A.

**C** Using the bracket as a template, mark the hole locations on the pilaster. Remove the bracket and drill  $\varnothing 1/4"$  holes through the pilaster at each location.

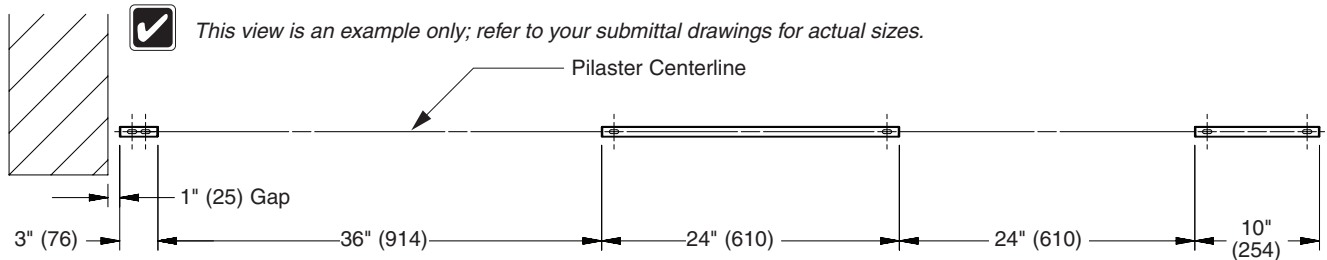
**D** **Stirrup:** Secure the brackets to the pilaster using the #10-24 x 1/2" barrel nuts and #10-24 x 3/4" shoulder screws provided.

**Continuous:** Secure the brackets to the pilaster using the #10-24 x 1/2" barrel nuts and #10-24 x 1/2" shoulder screws provided.



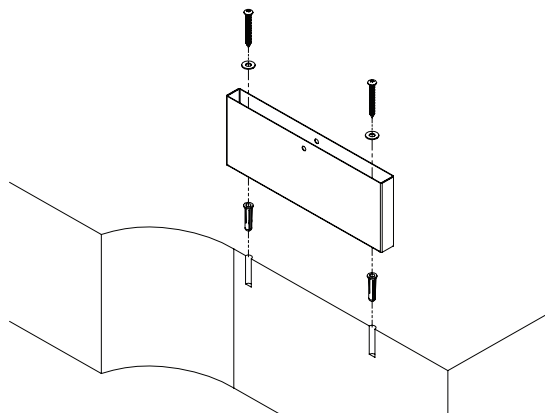
#### 5 Pilaster Mounting Hardware

**A** Starting with the pilaster closest to the wall, measure and mark the pilaster and door widths on the pilaster centerline. Make sure to leave the appropriate gap between the wall and the pilaster. Place corresponding shoe on the pilaster centerline and center between the marks.



**B** Using the shoe as a template, mark the hole locations on the floor. Remove the shoe and drill  $\varnothing 5/16"$  holes (min. 2" (51) deep) into the floor. Make sure the holes are free of dirt and debris.

**C** Insert plastic anchors into the holes and secure the shoe to the anchors using the 9/32" x 5/8" flat washer and #14 x 2" screws provided.

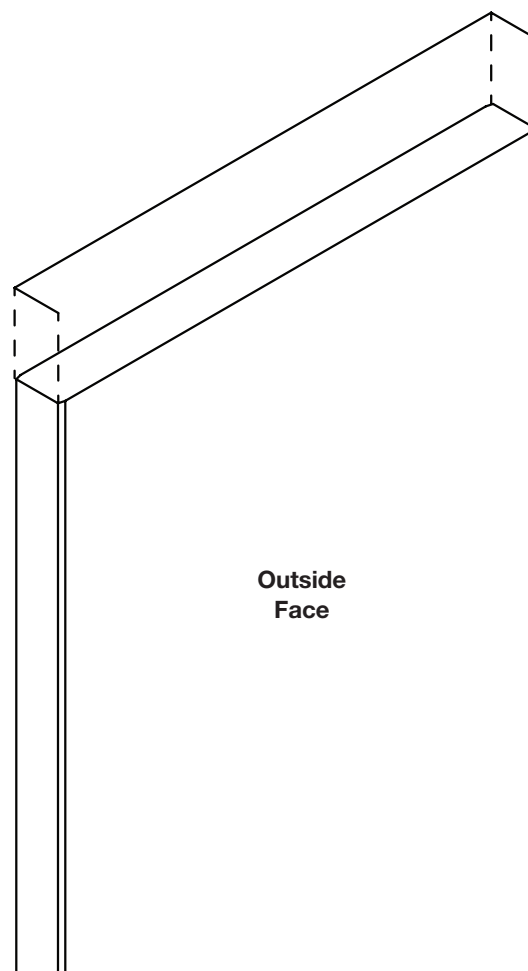
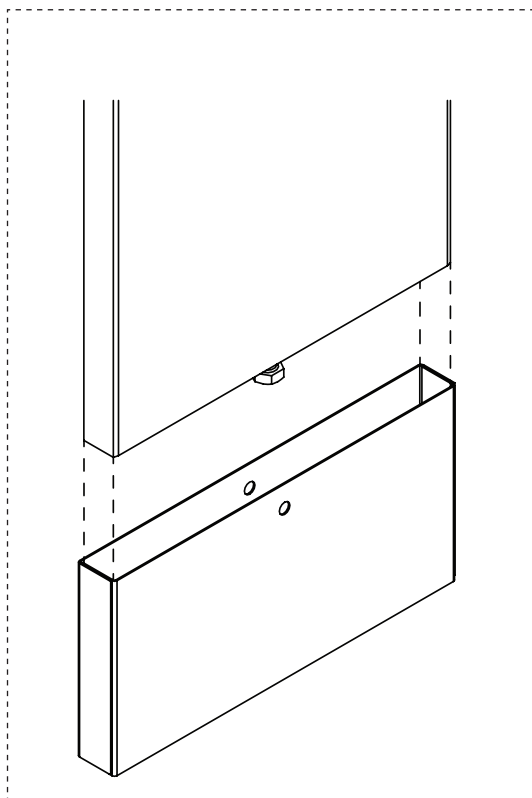


## 5a Pilaster Ceiling Mounting Hardware



Each pilaster comes with a matching shoe kit containing the required fasteners and L-brackets for mounting.

**A** Place the pilaster into the shoe secured to the floor. Verify that the pilaster is plumb in both directions. Project the outer edges and inside face of the pilaster onto the ceiling.



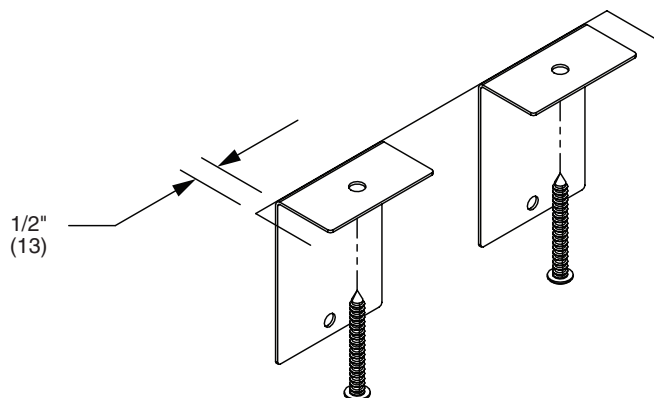
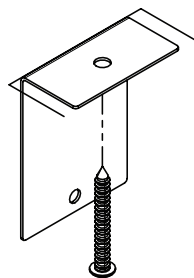
Remove pilaster and position L-bracket(s) accordingly.

**B** **3"-5" Pilasters:** Center (1) L-bracket between the projected outer edge lines and flush with the projected inside face line.

**6"-24" Pilasters:** Place (2) L-brackets 1/2" (13) in from each outer edge line and flush with the projected inside face line.

**C** Using the bracket as a template, mark the hole location on the ceiling. Remove the bracket and drill a Ø5/16" hole (min 2" (51) deep).

**D** Insert the plastic anchor and secure the bracket to the ceiling with the #14 x 2" screw provided.



## 6 Pilasters and Panels with Stirrup Brackets (Standard)

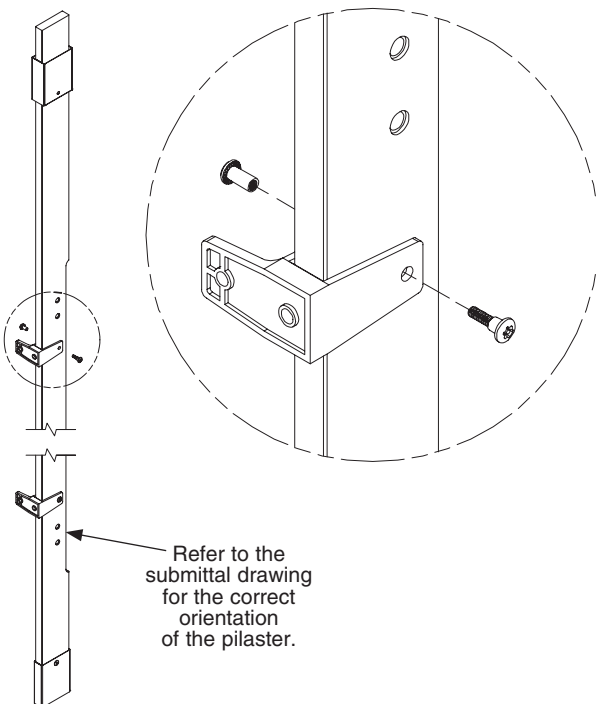
- ✓ Pilasters located at walls should be mounted first. Start at one end and install a panel, then a pilaster. Continue alternating until installation is complete. When installing in an alcove or in-corner, use an alcove bracket to secure the pilaster to the panel.
- ✓ Check to make sure the pilasters are plumb and level to each other. The pilaster height can be adjusted with the leveling screw that was placed at the bottom of the pilaster (see page 11 for attaching leveling screw).
- ✓ 2-stirrup bracket set is shown below.

### Pilasters at Wall

- ✓ When installing pilasters at walls, the gaps range from 1/2" to 1-1/4" (13 to 32). Refer to your submittal drawing for your gap sizes.

**A** Slide a shoe onto the top of the pilaster and use a piece of tape to keep the shoe positioned about 5" (127) from the end. Make sure the shoe mounting hole is towards the bottom.

**B** Place the pilaster into the shoe secured to the floor while at the same time placing it within the wall brackets.



**C** Using the bracket as a template, drill Ø1/4" holes through the pilaster at each pilaster bracket hole. Secure the pilaster to the bracket using the #10-24 x 1/2" barrel nuts and #10-24 x 3/4" shoulder screws provided.

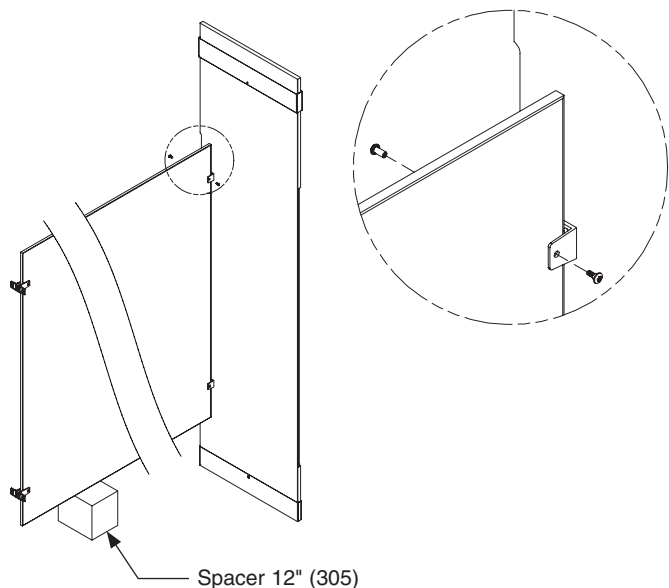
### Pilasters with Panels

- ✓ Refer to your submittal drawing and leave the appropriate gaps. Standard gap is 1" (25) between the panel and wall and 1/2" (13) between the panel and pilaster.

**A** Place the panel on the spacer and insert the panel into the wall brackets.

**B** Slide a shoe onto the top pilaster and use a piece of tape to keep the shoe positioned about 5" (127) from the end. Make sure the shoe mounting hole is towards the bottom.

**C** Place the pilaster into the shoe secured to the floor while at the same time placing the brackets around the panel.



**D** Using the bracket as a template, drill Ø1/4" holes through the panel at each panel bracket hole. Secure the panel to the bracket using the #10-24 x 1/2" barrel nuts and #10-24 x 1/2" shoulder screws provided.

**6a Pilasters and Panels with Stainless Steel Continuous Brackets (Optional)**

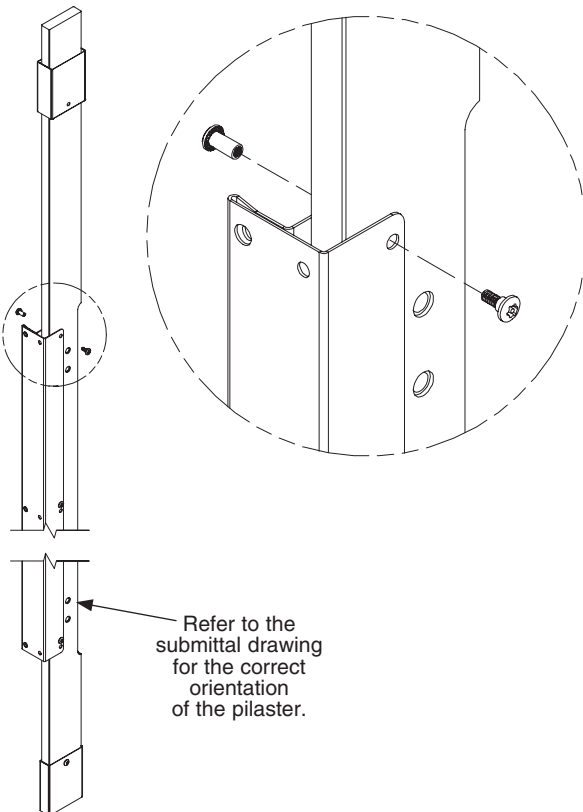
- ☒ Pilasters located at walls should be mounted first. Start at one end and install a panel, then a pilaster. Continue alternating until installation is complete. When installing in an alcove or in-corner, use an alcove bracket to secure the pilaster to the panel.
- ☒ Check to make sure the pilasters are plumb and level to each other. The pilaster height can be adjusted with the leveling screw that was placed at the bottom of the pilaster (see page 11 for attaching leveling screw).

**Pilasters at Wall**

- ☒ When installing pilasters at walls, the gaps range from 1/2" to 1-1/4" (13 to 32). Refer to your submittal drawing for your gap sizes.

**A** Slide a shoe onto the top of the pilaster and use a piece of tape to keep the shoe positioned about 5" (127) from the end. Make sure the shoe mounting hole is towards the bottom.

**B** Place the pilaster into the shoe secured to the floor while at the same time placing it within the wall bracket.



**C** Using the bracket as a template, drill Ø1/4" holes through the pilaster at each pilaster bracket hole. Secure the pilaster to the bracket using the #10-24 x 1/2" barrel nuts and #10-24 x 1/2" shoulder screws provided.

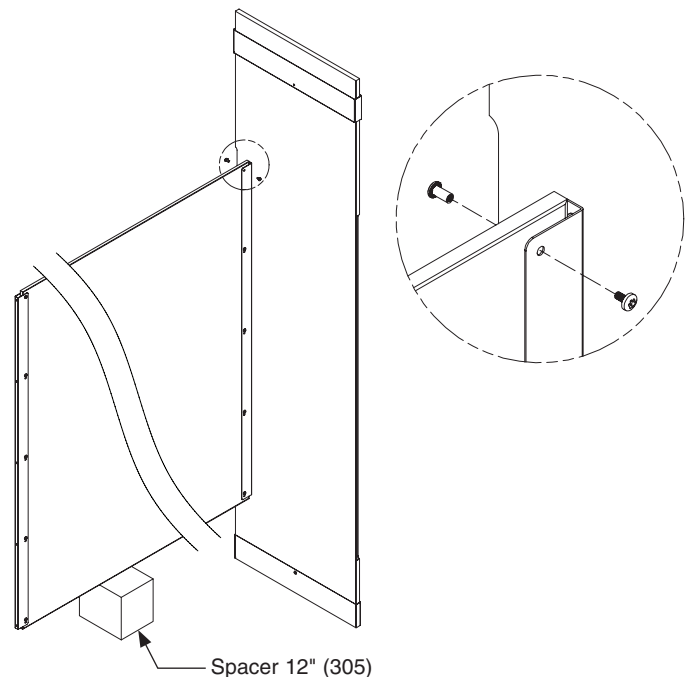
**Pilasters with Panels**

- ☒ Refer to your submittal drawing and leave the appropriate gaps. Standard gap is 1" (25) between the panel and wall and 1/2" (13) between the panel and pilaster.

**A** Place the panel on the spacer and insert the panel into the wall bracket.

**B** Slide a shoe onto the top of the pilaster and use a piece of tape to keep the shoe positioned about 5" (127) from the end. Make sure the shoe mounting hole is towards the bottom.

**C** Place the pilaster into the shoe secured to the floor while at the same time placing the bracket around the panel.



**D** Using the bracket as a template, drill Ø1/4" holes through the panel at each panel bracket hole. Secure the panel to the bracket using the #10-24 x 1/2" barrel nuts and #10-24 x 3/8" machine screws provided.



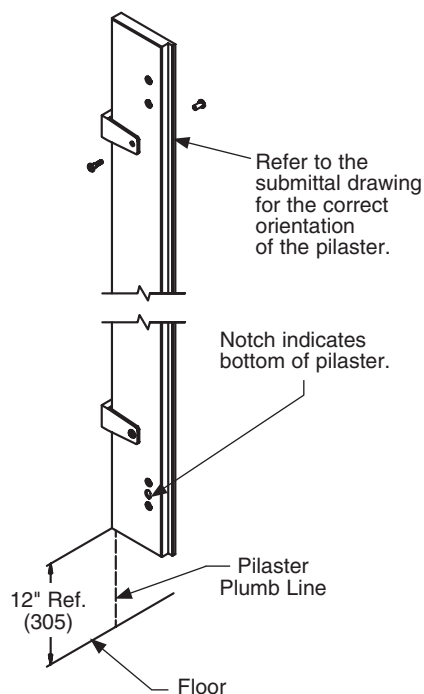
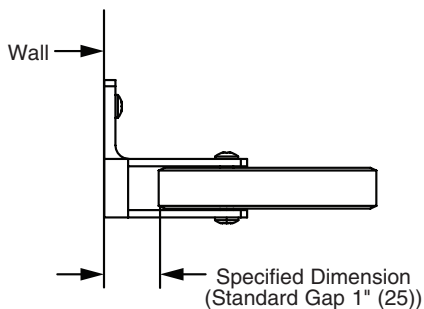
**6b Wall-Hung Pilasters (58") – Stirrup Brackets (Optional)**

- ✓ See Step 2 for instructions on mounting the stirrup brackets to a wall.
- ✓ See Step 4 for instructions on mounting the stirrup brackets to a pilaster.
- ✓ To establish level line, from the highest point in the room, measure 12" Ref. (305) from the floor. Use a level to transfer this mark to the pilaster plumb line.
- ✓ Hinged wall-hung pilasters shown.
- ✓ 2-stirrup bracket set is shown below.

**Pilasters at Wall**

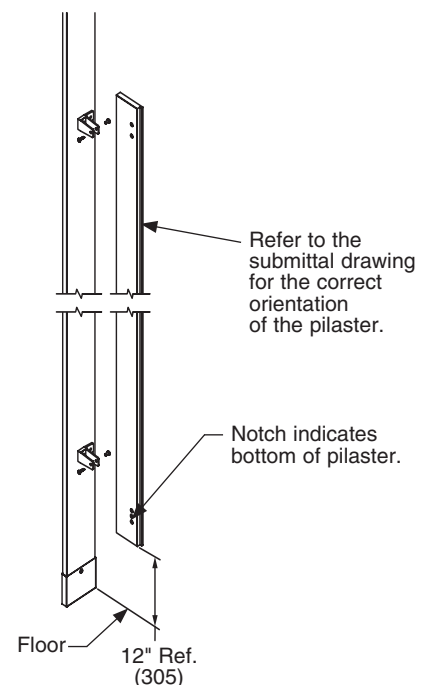
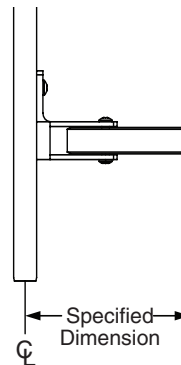
**A** Slide the wall-hung pilaster into the stirrup brackets and align with the established level line. Refer to the submittal drawing and adjust to meet the specified dimension.

**B** Using the bracket as a template, drill Ø1/4" holes through the pilaster at each pilaster bracket hole. Secure the pilaster to the bracket using the #10-24 x 1/2" barrel nuts and #10-24 x 3/4" shoulder screws provided.

**Pilasters at Pilasters**

**A** Slide the wall-hung pilaster into the stirrup brackets and align with the established level line. Refer to the submittal drawing and adjust to meet the specified dimension.

**B** Using the bracket as a template, drill Ø1/4" holes through the pilaster at each pilaster bracket hole. Secure the pilaster to the bracket using the #10-24 x 1/2" barrel nuts and #10-24 x 3/4" shoulder screws provided.



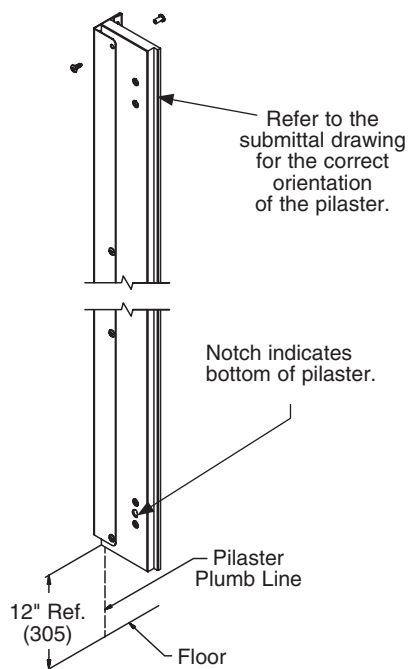
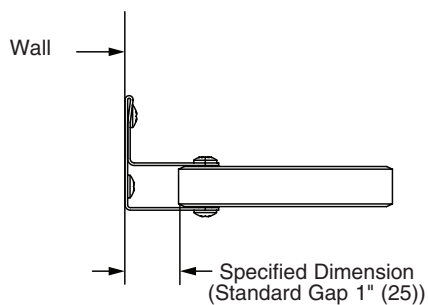
**6c Wall-Hung Pilasters (58") – Continuous Stainless Steel Brackets (Optional)**

- ✓ See Step 2a for instructions on mounting the continuous stainless steel brackets to a wall.
- ✓ See Step 4a for instructions on mounting the continuous stainless steel brackets to a pilaster.
- ✓ To establish level line, from the highest point in the room, measure 12" Ref. (305) from the floor. Use a level to transfer this mark to the pilaster plumb line.
- ✓ Hinged wall-hung pilaster shown.

**Pilasters at Wall**

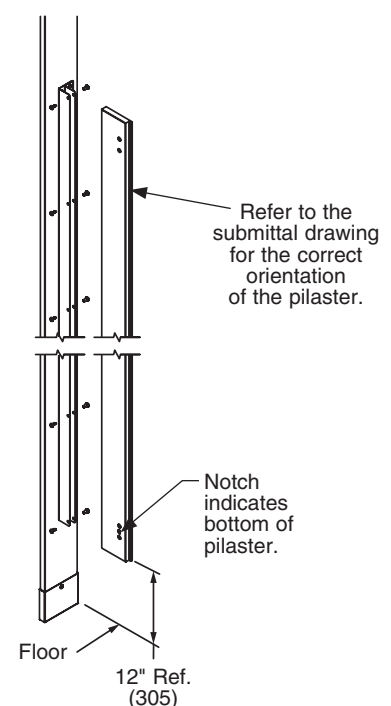
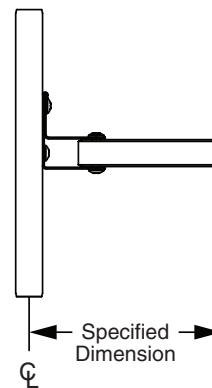
**A** Slide the wall-hung pilaster into the continuous bracket and align with the established level line. Refer to the submittal drawing and adjust to meet the specified dimension.

**B** Using the bracket as a template, drill Ø1/4" holes through the pilaster at each pilaster bracket hole. Secure the pilaster to the bracket using the #10-24 x 1/2" barrel nuts and #10-24 x 1/2" shoulder screws provided.

**Pilasters at Pilasters**

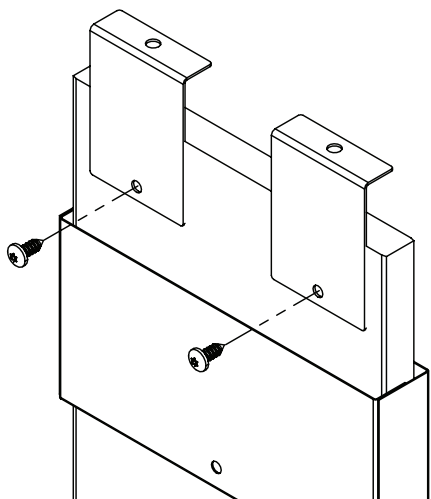
**A** Slide the wall-hung pilaster into the continuous bracket and align with the established level line. Refer to the submittal drawing and adjust to meet the specified dimension.

**B** Using the bracket as a template, drill Ø1/4" holes through the pilaster at each pilaster bracket hole. Secure the pilaster to the bracket using the #10-24 x 1/2" barrel nuts and #10-24 x 1/2" shoulder screws provided.

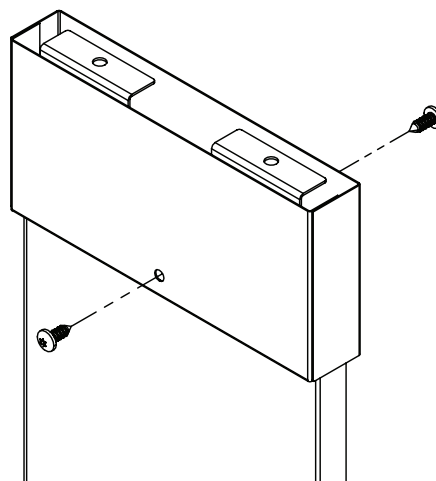


## 7 Pilaster Shoes

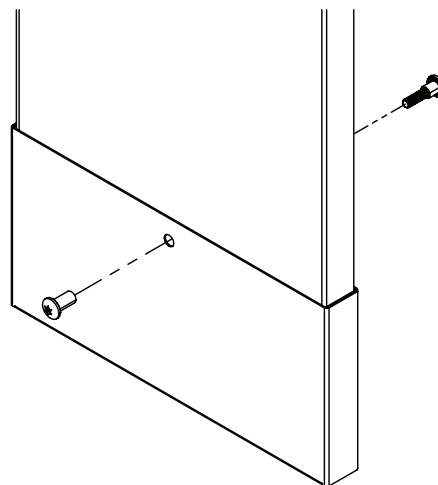
**A** Using the L-bracket(s) as a template, drill a  $\text{Ø}15/64$ " pilot hole into the pilaster,  $5/8$ " (16) deep. Secure L-bracket(s) to pilaster using the  $1/4$ " x  $5/8$ " screws provided.



**B** Using the hole in the top shoe as a template, drill a  $\text{Ø}15/64$ " hole through the pilaster. Secure the top shoe to the pilaster using the  $1/4$ " x  $5/8$ " screws provided.

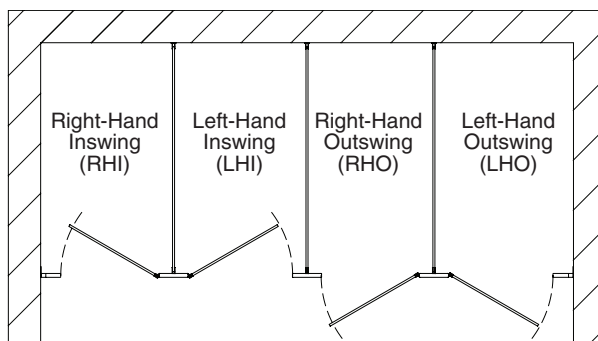


**C** Using the hole in the bottom shoe as a template, drill a  $\text{Ø}1/4$ " hole through the pilaster. Secure the pilaster to the bottom shoe using the #10-24 x  $1/2$ " barrel nut and #10-24 x  $3/4$ " shoulder screw provided.

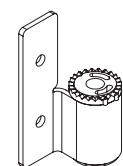


## 8 Surface-Mounted Hinges

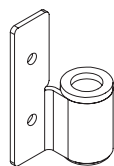
- ✓ Before installing the hinges, make sure the door openings are the appropriate size and all pilasters are plumb and secured to the shoe and ceiling mounting hardware.
- ✓ Refer to your submittal drawings to determine each specific door swing for your application. The door swing is determined by facing the compartment from the outside. The image below can help determine the door swing type.
- ✓ Hinges are mounted to the factory-installed inserts on the doors and pilasters.



**A** Separate the hinge components and ensure all parts are included as shown.



Hinge Leaf  
with Teeth  
Any Hand (2)



Hinge Leaf  
without Teeth  
Any Hand (2)

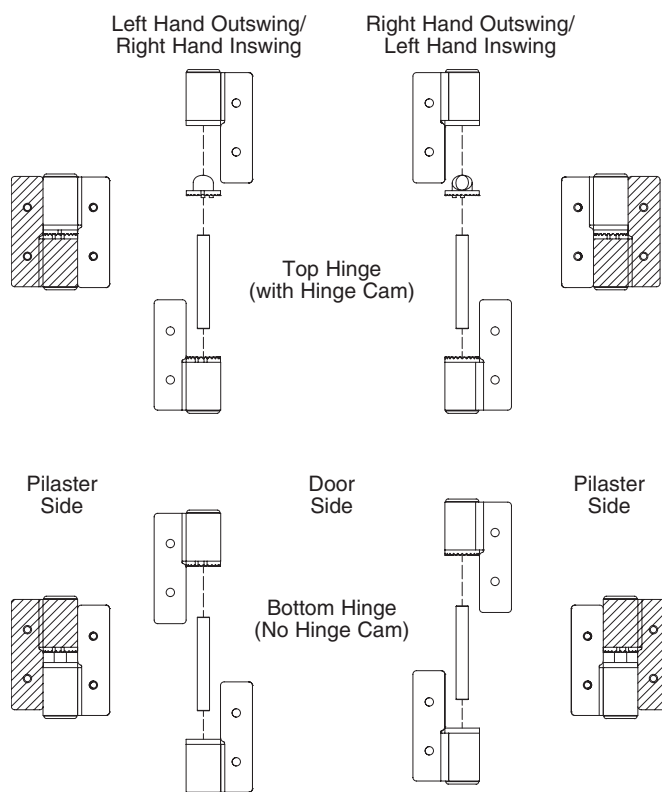


Hinge Pin  
(2)



Cam  
(1)

**B** Locate the hinge assembly that coincides with the door swing. Arrange the hinge sets as shown.



## 8 Surface-Mounted Hinges (continued)

☒ The knuckle gap of the top hinge varies based on the cam setting.

☒ Left-hand outswing door shown.

**C** Refer to the hinge diagram and identify the top and bottom hinges. The hinge leaves are configured so that the door cannot be lifted off of the pilaster.

### Pilaster - Top & Bottom Hinge Leaf

**D** Separate the hinge leaves. Align the holes in the leaves that have the plastic bushings with teeth and the cam alignment slots to the threaded inserts in the pilaster. Secure using the 1/4-20 x 1/2" cap screws provided. Hand tighten screws.

**E** Insert the hinge pin and cam into the top pilaster leaf. The alignment tabs on the cam should fit into the slots on the leaf.

### Door - Top Hinge Leaf

**F** Align the holes in the leaf without teeth to the top threaded inserts in the door, and then secure using the 1/4-20 x 1/2" cap screws provided. Hand tighten screws.

**G** Lift the door into place. Slide the top door leaf over the top pilaster leaf hinge pin and rest on the spacer (provided by others).

### Door - Bottom Hinge Leaf

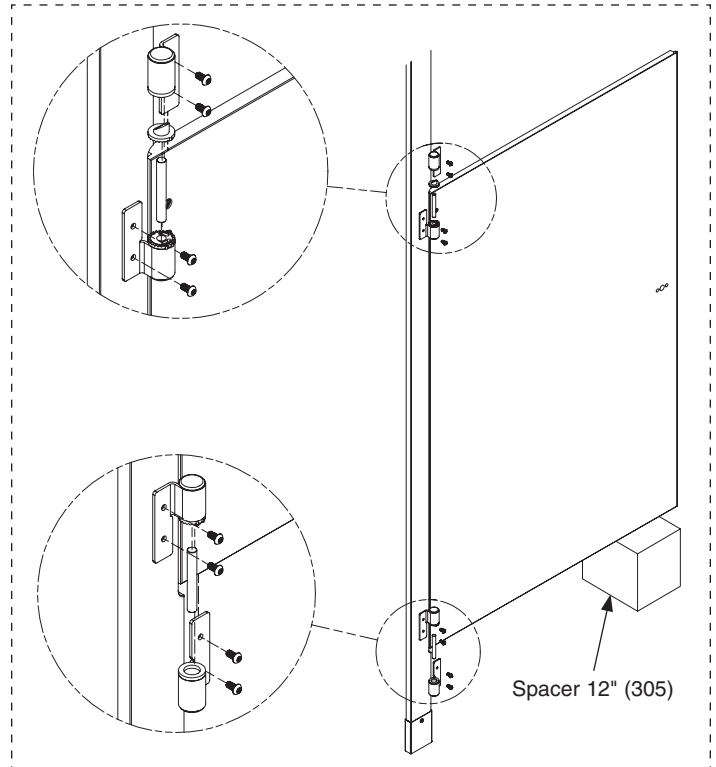
**H** Insert the hinge pin into the bottom hinge door leaf and slide it up into the pilaster bottom hinge leaf. Align the holes with the inserts in the door and secure using the 1/4-20 x 1/2" cap screws provided. Hand tighten screws.

**I** Place 1/8" spacers (by others) between the door and pilaster notch at the top and bottom to achieve a symmetric gap between the door, pilaster on hinge, and latch sides. Torque screws to 80–90 in-lb.

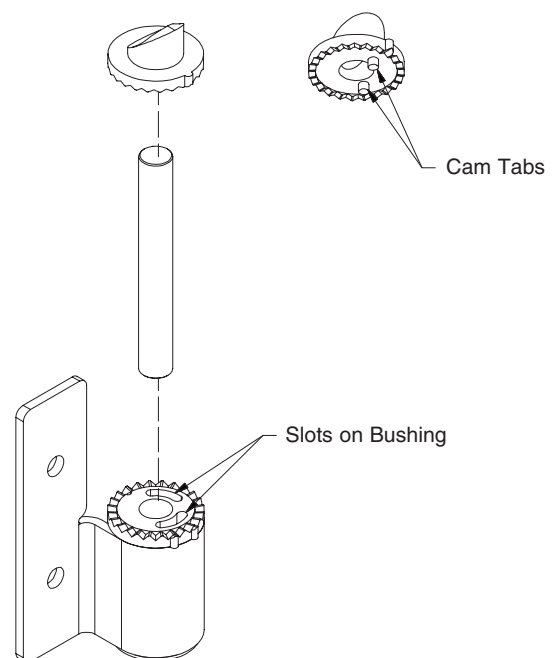
**J** Adjust the door opening as follows:

- To increase the door opening, lift the door and rotate cam toward the direction of the door, making sure the bushing and cam tabs are aligned.
- To decrease the door opening, lift the door and rotate cam toward the direction of the pilaster, making sure the bushing and cam tabs are aligned.

☒ The gap between the bottom of the door and the pilaster leaf is needed for rise of the door when opened.



☒ The tabs on the cam need to align with the slots in the leaf with has the plastic bushing and teeth.

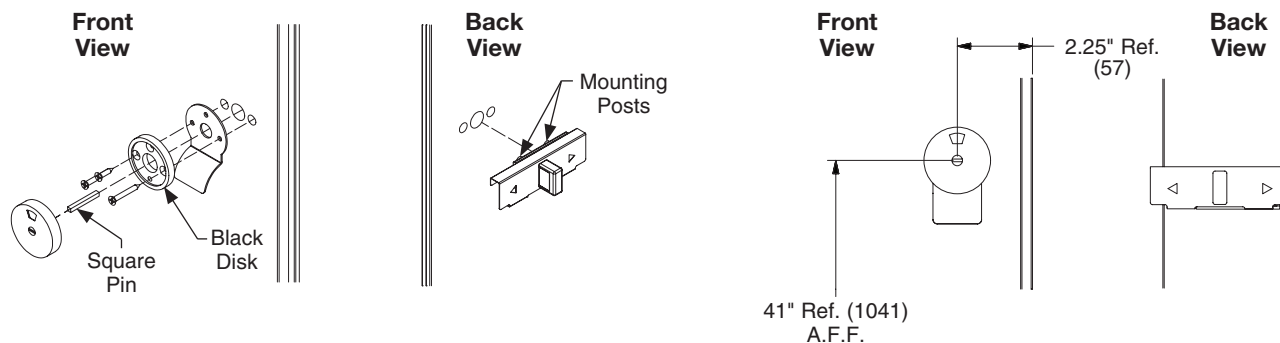


## 9 Door Hardware for Inswing Doors



Local codes vary from state to state. Check your local codes before installing the door pulls and coat hook.

- A** From the back side of the door, align the two mounting posts on the slide latch with the holes in the door. Hold or tape in place.



- B** From the front side of the door, align the black disk with the countersunk holes at top and sides with the holes in the metal handle. Place the longer flat head Phillips drive screws (provided) through the side holes in the black disk, metal handle, and door. Secure to the mounting posts in the slide latch.

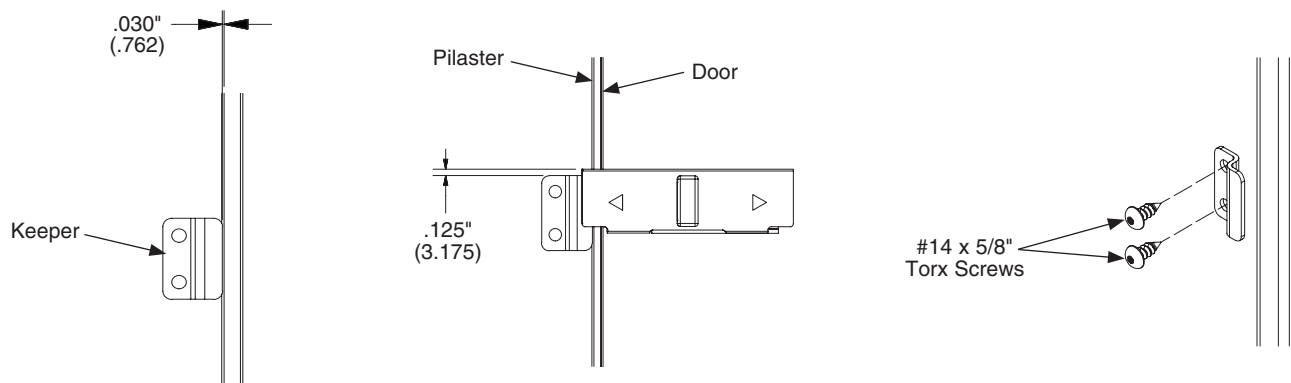
- C** Using the top countersunk hole in the black disk as a template, drill a  $\varnothing 9/64$ " pilot hole, 1/2" (13) deep and secure to the door using the small flat head Phillips drive screw (provided).

- D** Place the square pin into the back of the indicator circle. Verify the red indication color is in the proper position so that red will appear when the latch is in the closed position.

- E** Slide the square pin through the large center hole in the door and into the slide latch on the other side.

- F** Again, verify the red indication color is in the proper position to appear when the latch is in the closed position before securing the indicator circle with the small tabs over the black plastic piece.

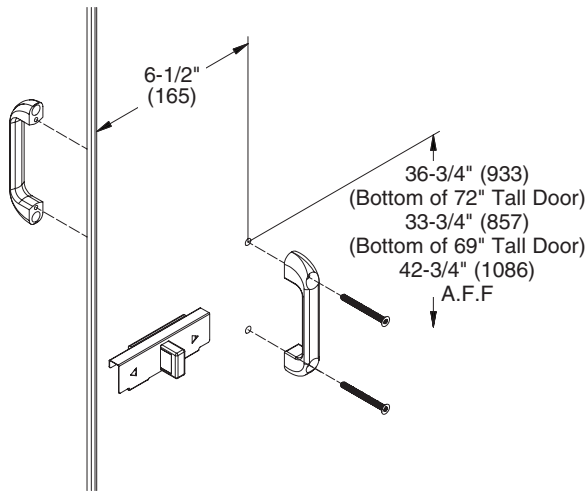
- G** With the door in the closed position, place the keeper on the pilaster so the leading edge is .030" (.762) from the pilaster notch and the slide latch moves freely over the keeper. Using the keeper as a template, drill (2)  $\varnothing 15/64$ " pilot holes, 5/8" (16) deep. Secure with the #14 x 5/8" Torx screws provided.



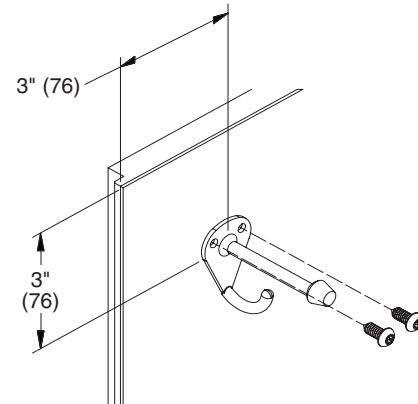
When the door latch is correctly installed, the red indicator color should appear when the latch is in the closed position.

## 9 Door Hardware for Inswing Doors (continued)

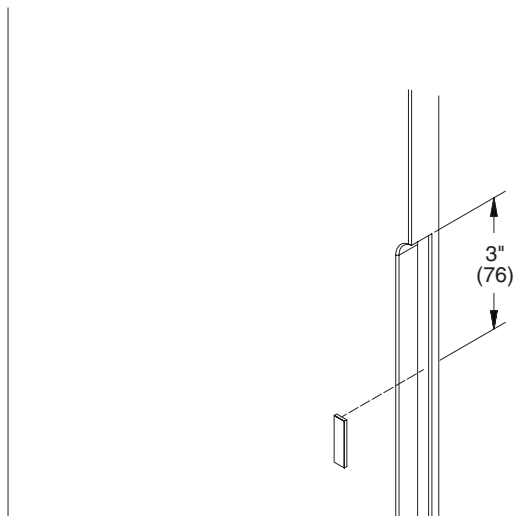
**H** For 34"-36" doors, mark the location for the top hole on the inside face of the door 30-3/4" (781) up from the bottom of 58" tall doors (42-3/4" (1086) above finished floor) and 6-1/2" (165) from the door edge. Drill (2) Ø1/4" holes (spaced 3-1/2" (89) apart) through the door and secure the door pulls to the door as shown with the #10-24 x 2" flat machine screws provided.



**I** Place the coat hook 3" (76) down from the top and 3" (76) from the latch side of the door (hook goes on the inside face of the door). Using the hook as a template, drill (2) Ø11/64" pilot holes, 5/8" (16) deep. Secure with the #10 x 5/8" screws provided.



**J** Clean the strike pilaster notched surface using isopropyl alcohol (by others). Remove a dampening strip from the liner and place the top edge 3" (76) down from the top notch; apply pressure to adhere to the pilaster. Remove the second dampening strip from the liner and place the bottom edge 3" (76) up from the bottom notch, and apply pressure to adhere to the pilaster.



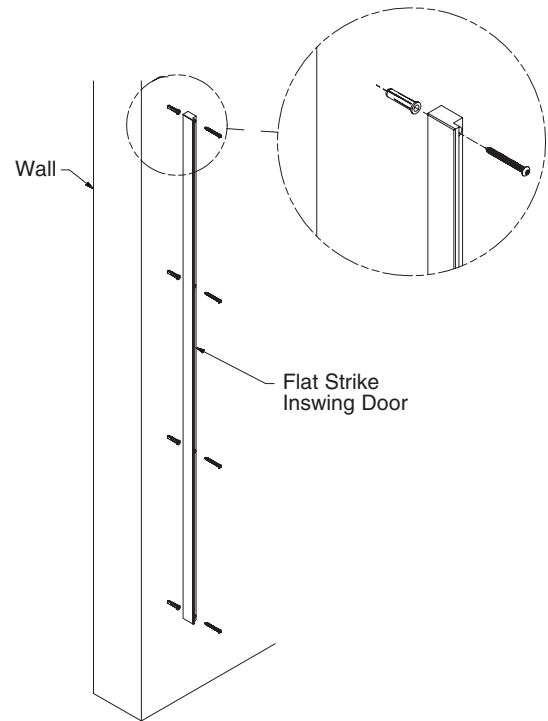
**9 Door Hardware for Inswing Doors (continued)****Flat Strike at Wall – Inswing**

**K** With the door in the closed position, place the non-notched edge of the flat strike against the wall. The notched edge of the door should fit into the notch on the flat strike. The top edge of the flat strike and door should align along with the front faces.

**L** Using the flat strike as a template, mark the hole locations on the wall. Remove the flat strike and drill a  $\varnothing 1/4"$  hole (min. 2" (51) deep) at each hole location.

**M** Insert the plastic anchors in all of the holes and secure the flat strike to the wall using the #10 x 2" screws provided.

**N** Refer to Step G for installing the keeper and Step J for installing the dampening strip.

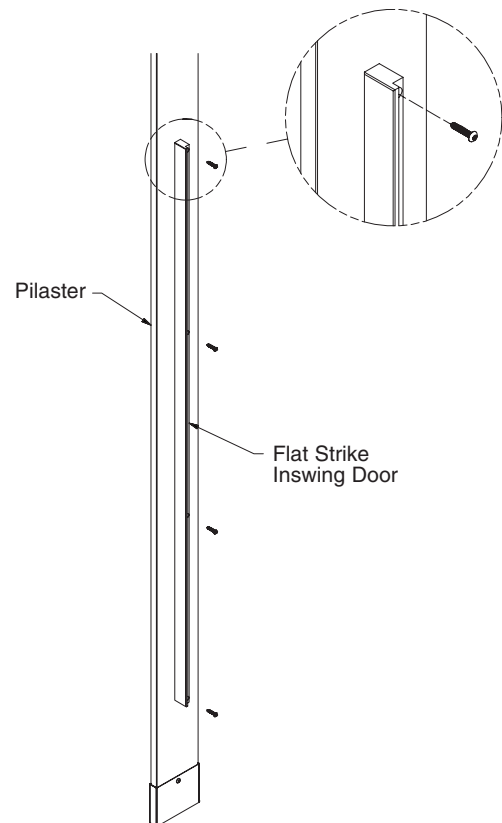
**Flat Strike at Pilaster – Inswing**

**O** With the door in the closed position, place the non-notched edge of the flat strike against the pilaster. The notched edge of the door should fit into the notch on the flat strike. The top edge of the flat strike and door should align along with the front faces.

**P** Using the flat strike as a template, mark the hole locations on the pilaster. Remove the flat strike and drill a  $\varnothing 11/64"$  hole (min. 1/2" (13) deep) at each hole location.

**Q** Secure the flat strike to pilaster wall using the #10 x 1" screws provided.

**R** Refer to Step G for installing the keeper and Step J for installing the dampening strip.



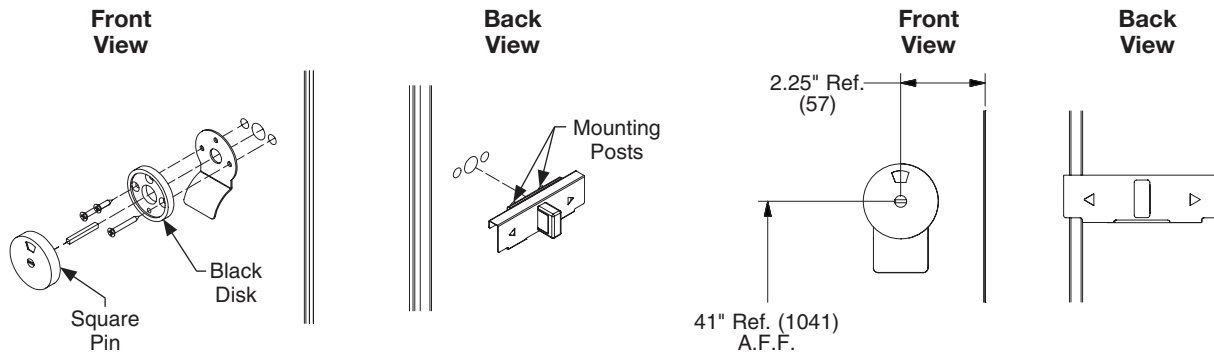


## 9a Door Hardware for Outswing Doors



Local codes vary from state to state. Check your local codes before installing the door pulls and coat hook.

- A** From the back side of the door, align the two mounting posts on the slide latch with the holes in the door. Hold or tape in place.



- B** From the front side of the door, align the black disk with the countersunk holes at top and sides with the holes in the metal handle. Place the longer flat head Phillips drive screws (provided) through the side holes in the black disk, metal handle, and door. Secure to the mounting posts in the side latch.

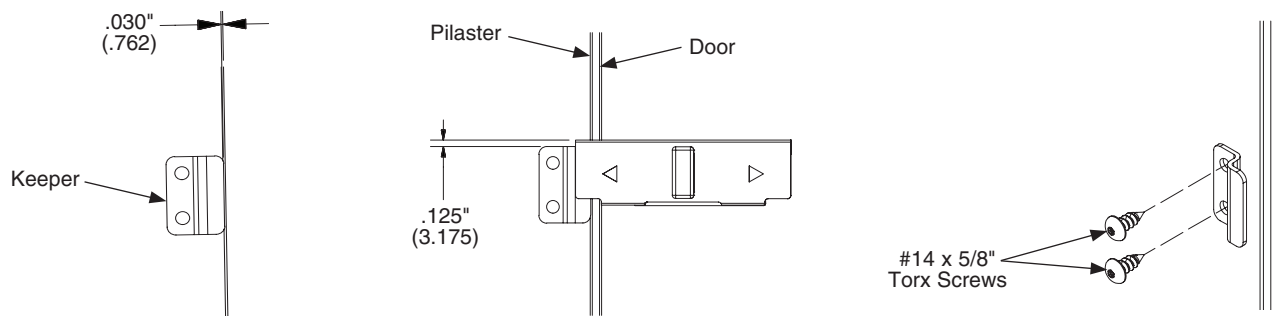
- C** Using the top countersunk hole in the black disk as a template, drill a  $\varnothing 9/64$ " pilot hole,  $1/2$ " (13) deep and secure to the door using the small flat head Phillips drive screw (provided).

- D** Place the square pin into the back of the indicator circle. Verify the red indication color is in the proper position so that red will appear when the latch is in the closed position.

- E** Slide the square pin through the large center hole in the door and into the slide latch on the other side.

- F** Again, verify the red indication color is in the proper position to appear when the latch is in the closed position before securing the indicator circle with the small tabs over the black plastic piece.

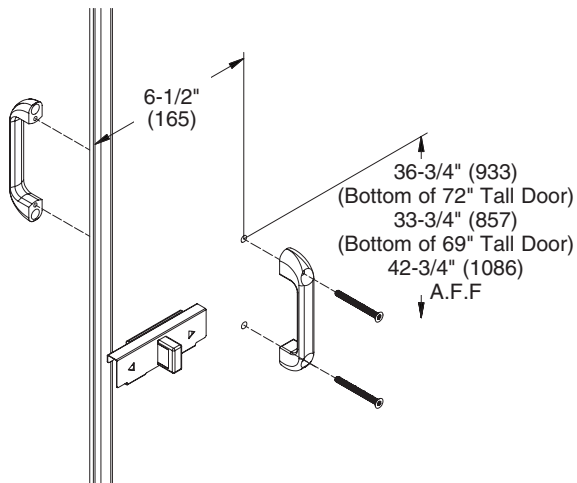
- G** With the door in the closed position, place the keeper on the pilaster so the leading edge is  $.030$ " (.762) from the pilaster edge and the slide latch moves freely over the keeper. Using the keeper as a template, drill (2)  $\varnothing 15/64$ " pilot holes,  $5/8$ " (16) deep. Secure with the #14 x  $5/8$ " Torx screws provided.



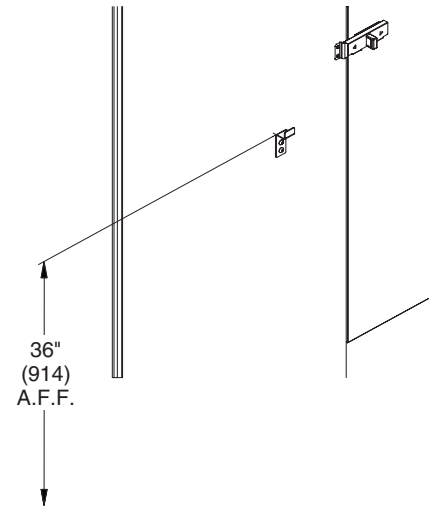
When the door latch is correctly installed, the red indicator color should appear when the latch is in the closed position.

## 9a Door Hardware for Outswing Doors (continued)

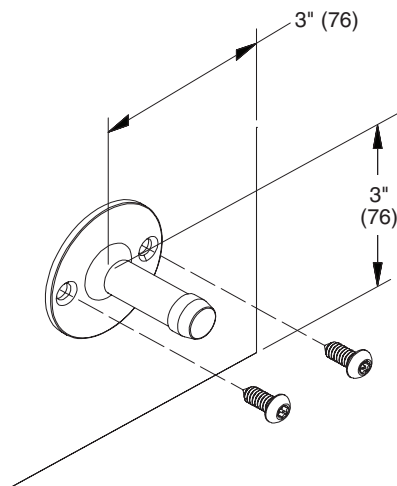
**H** For 34"–36" doors, mark the location for the top hole on the inside face of the door 30-3/4" (781) up from the bottom of 58" tall doors (42-3/4" (1086) above finished floor) and 6-1/2" (165) from the door edge. Drill (2) Ø1/4" holes (spaced 3-1/2" (89) apart) through the door and secure the door pulls to the door as shown with the #10-24 x 2" flat machine screws provided.



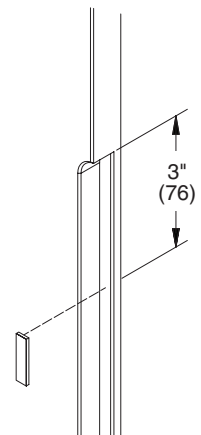
**I** Position the coat hook 36" (914) above finished floor (hook goes on the inside face of the compartment). Using the hook as a template, drill (2) Ø15/64" pilot holes, 5/8" (16) deep. Secure with the #14 x 5/8" screws provided.



**J** Position the wall bumper 3" (76) up from the bottom and 3" (76) from the latch side of the door (bumper goes on the outside face of the door). Using the bumper as a template, drill (2) Ø11/64" pilot holes, 5/8" (16) deep. Secure to the door using the #10 x 5/8" screws provided.



**K** Clean the strike pilaster notched surface using isopropyl alcohol (by others). Remove a dampening strip from the liner and place the top edge 3" (76) down from the top notch; apply pressure to adhere to the pilaster. Remove the second dampening strip from the liner and place the bottom edge 3" (76) up from the bottom notch, and apply pressure to adhere to the pilaster.



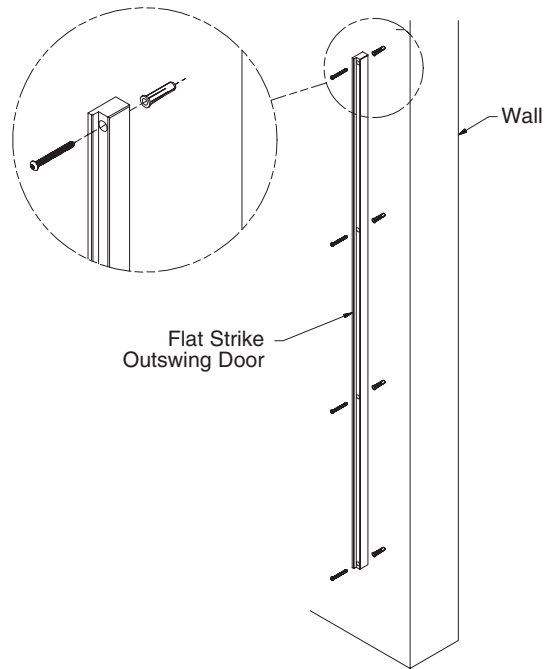
**9a Door Hardware for Outswing Doors (continued)****Flat Strike at Wall – Outswing**

**L** With the door in the closed position, place the non-notched edge of the flat strike against the wall. The notched edge of the door should fit into the notch on the flat strike. The top edge of the flat strike and door should align along with the front faces.

**M** Using the flat strike as a template, mark the hole locations on the wall. Remove the flat strike and drill a  $\varnothing 1/4"$  hole (min. 2" (51) deep) at each hole location.

**N** Insert the plastic anchors in all of the holes and secure the flat strike to the wall using the #10 x 2" screws provided.

**O** Refer to Step G for installing the keeper and Step K for installing the dampening strip.

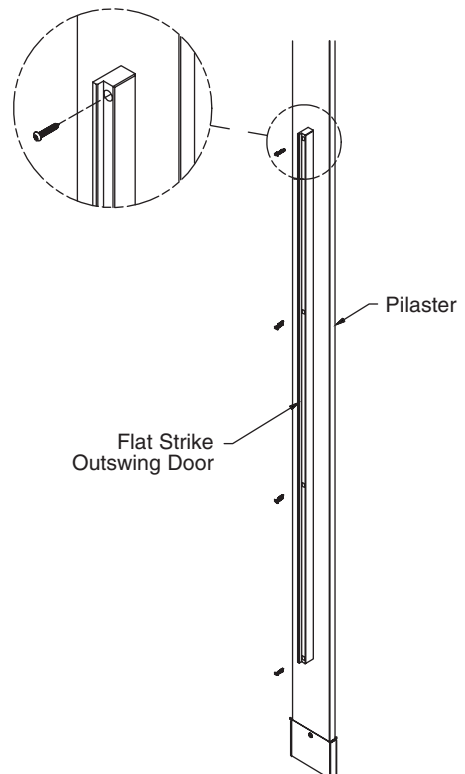
**Flat Strike at Pilaster – Outswing**

**P** With the door in the closed position, place the non-notched edge of the flat strike against the pilaster. The notched edge of the door should fit into the notch on the flat strike. The top edge of the flat strike and door should align along with the front faces.


**Q** Using the flat strike as a template, mark the hole locations on the pilaster. Remove the flat strike and drill a  $\varnothing 11/64"$  hole (min. 1/2" (13) deep) at each hole location.

**R** Secure the flat strike to pilaster wall using the #10 x 1" screws provided.

**S** Refer to Step G for installing the keeper and Step K for installing the dampening strip.

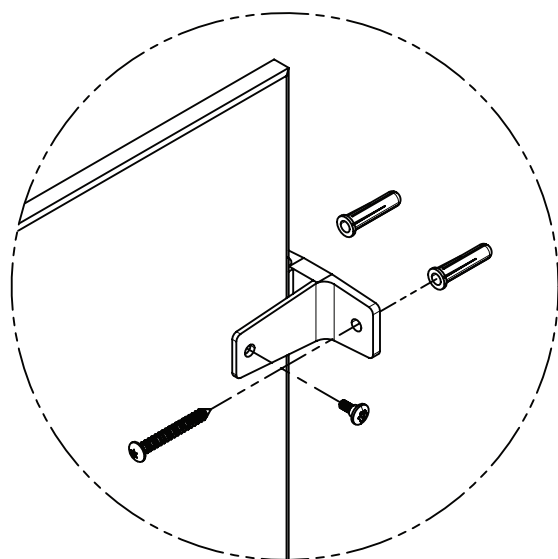


## 10 Urinal Screens with Stirrup Brackets (Standard)

-  Before installing the urinal screen components, determine the correct location for your application.

**A** Draw a plumb line on the wall to represent the urinal screen centerline. Measure from the highest point in the room and place a mark on the urinal screen centerline at dimensions "A", "B", and "C" for the respective urinal screen height (see table below).

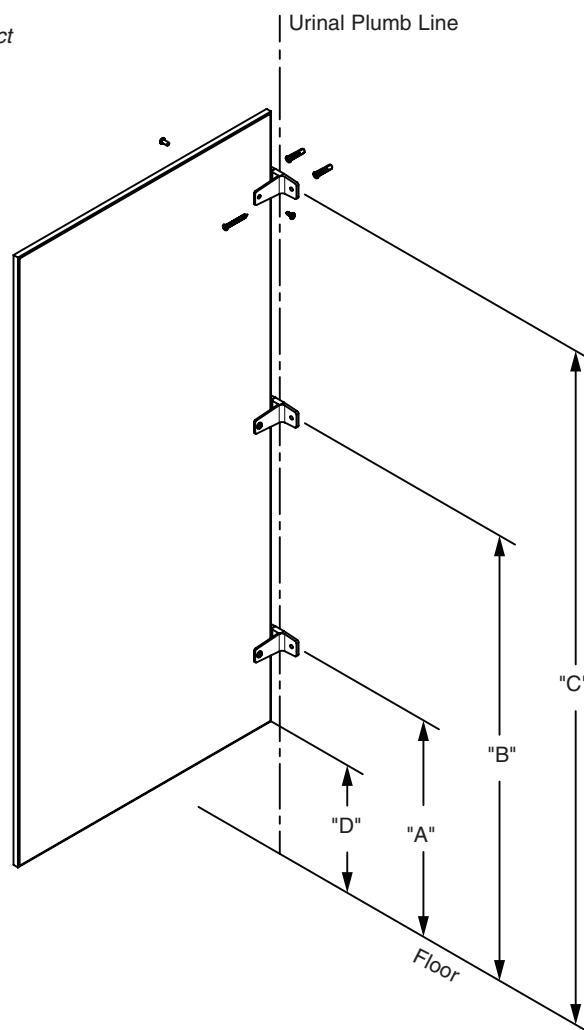
**B** Position and center brackets at each mark on the urinal screen centerline. Using the bracket as a template, mark the hole locations on the wall. Remove the bracket and drill a Ø5/16" hole (minimum 2" (51) deep) at each hole location.



**C** Insert plastic anchors in all holes and secure bracket to the wall with the #14 x 2" screws provided.

**D** Place the urinal screen at dimension "D" for the respective urinal screen height (see table on right) and insert it into the wall brackets until a 1" (25) gap between the wall and urinal screen is established.

**E** Using the bracket as a template, drill Ø1/4" holes through the urinal screen at each bracket hole. Secure the urinal screen to the brackets with the #10-24 x 1/2" barrel nuts and #10-24 x 1/2" shoulder screws provided.



|                   | Dim "A"      | Dim "B"      | Dim "C"       | Dim "D"      |
|-------------------|--------------|--------------|---------------|--------------|
| 42" Urinal Screen | 24"<br>(610) | 39"<br>(991) | 54"<br>(1372) | 18"<br>(457) |
| 48" Urinal Screen | 18"<br>(457) | 36"<br>(914) | 54"<br>(1372) | 12"<br>(305) |

**10a Urinal Screens with Continuous Stainless Steel Brackets (Optional)**

Before installing the urinal screen components, determine the correct location for your application.



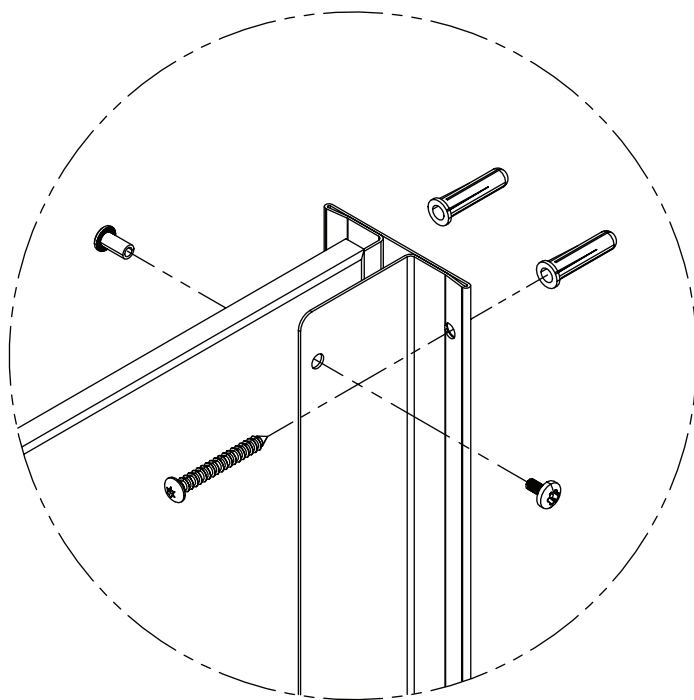
Brackets are used as templates, but since the hole patterns may be different, the brackets may not be interchangeable.

**A**

Draw a plumb line on the wall to represent the urinal screen centerline. Measure from the highest point in the room and place a mark on the urinal screen centerline at dimension "A" for the respective urinal screen height (see table below).

**B**

Place the bottom of the bracket on the mark and center the opening on the urinal screen centerline. Using the bracket as a template, mark the hole locations on the wall. Remove the bracket and drill a  $\text{Ø}5/16$ " hole (minimum 2" (51) deep) at each hole location.

**C**

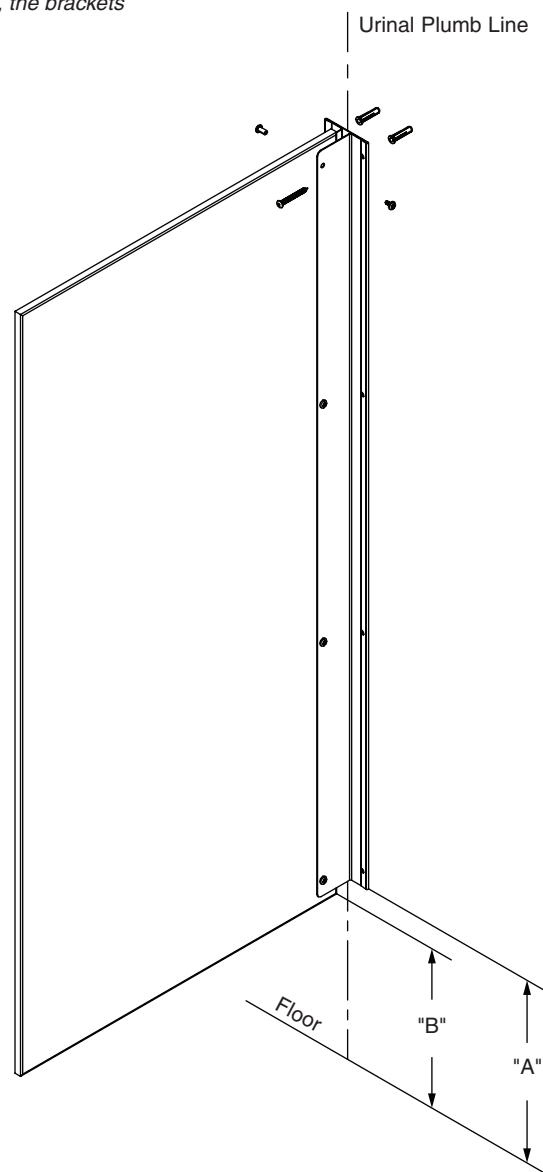
Insert plastic anchors in all holes and secure bracket to the wall with the #14 x 2" screws provided.

**D**

Place the urinal screen at dimension "B" for the respective urinal screen height (see table on right) and insert it into the wall bracket until a 1" (25) gap between the wall and urinal screen is established.

**E**

Using the bracket as a template, drill  $\text{Ø}1/4$ " holes through the urinal screen at each bracket hole. Secure the urinal screen to the bracket with the #10-24 x  $1/2$ " barrel nuts and #10-24 x  $3/8$ " machine screws provided.



|                   | Dim "A"          | Dim "B"      |
|-------------------|------------------|--------------|
| 42" Urinal Screen | 18-1/2"<br>(470) | 18"<br>(457) |
| 48" Urinal Screen | 12-1/2"<br>(318) | 12"<br>(305) |