



- Model 5942 — Recessed
- Model 5942-10 — Semi-Recessed (recesses 3¼"; projects 1¼")
- Model 5942-11 — Surface-Mounted (projects 4½")

- Dual Roll Tissue Dispenser/Waste Receptacle

Product Materials

CABINET: 22 gauge stainless steel with exposed surfaces in architectural satin finish. Welded construction with burr-free edges.

FLANGE: 22 gauge stainless steel with exposed surfaces in architectural satin finish. One-piece seamless construction, 1" wide with ¼" return.

DOOR: 18 gauge stainless steel with full-length piano hinge and tumbler lock keyed like other Bradley units.

PUSH FLAP DOOR: 22 gauge stainless steel with exposed surfaces in architectural satin finish. Self-closing, with heavy-duty stainless steel piano hinge.

WASTE RECEPTACLE: leakproof molded plastic. 1.7 gal. capacity.

SPINDLES: polyethylene, non-removable by user.



Capacity

Toilet Tissue Dispensers—Two standard core toilet tissue rolls through 5¼" in diameter. Box of 500 waxed paper liners are available by ordering part number P11-022.

Operation

Hinged access door permits servicing of components from one side.

Installation

Verify all rough-in dimensions prior to installation. Requires rough wall opening 15¾"W x 18¼"H x 4¼"D. Secure with mounting screws (included) at holes provided.

Guide Specification

Recessed combination unit shall include toilet tissue dispenser and napkin disposal, and be fabricated of stainless steel with seamless exposed surfaces in satin finish. Door and back panel shall be 18 gauge. Door shall have piano hinge and tumbler lock.

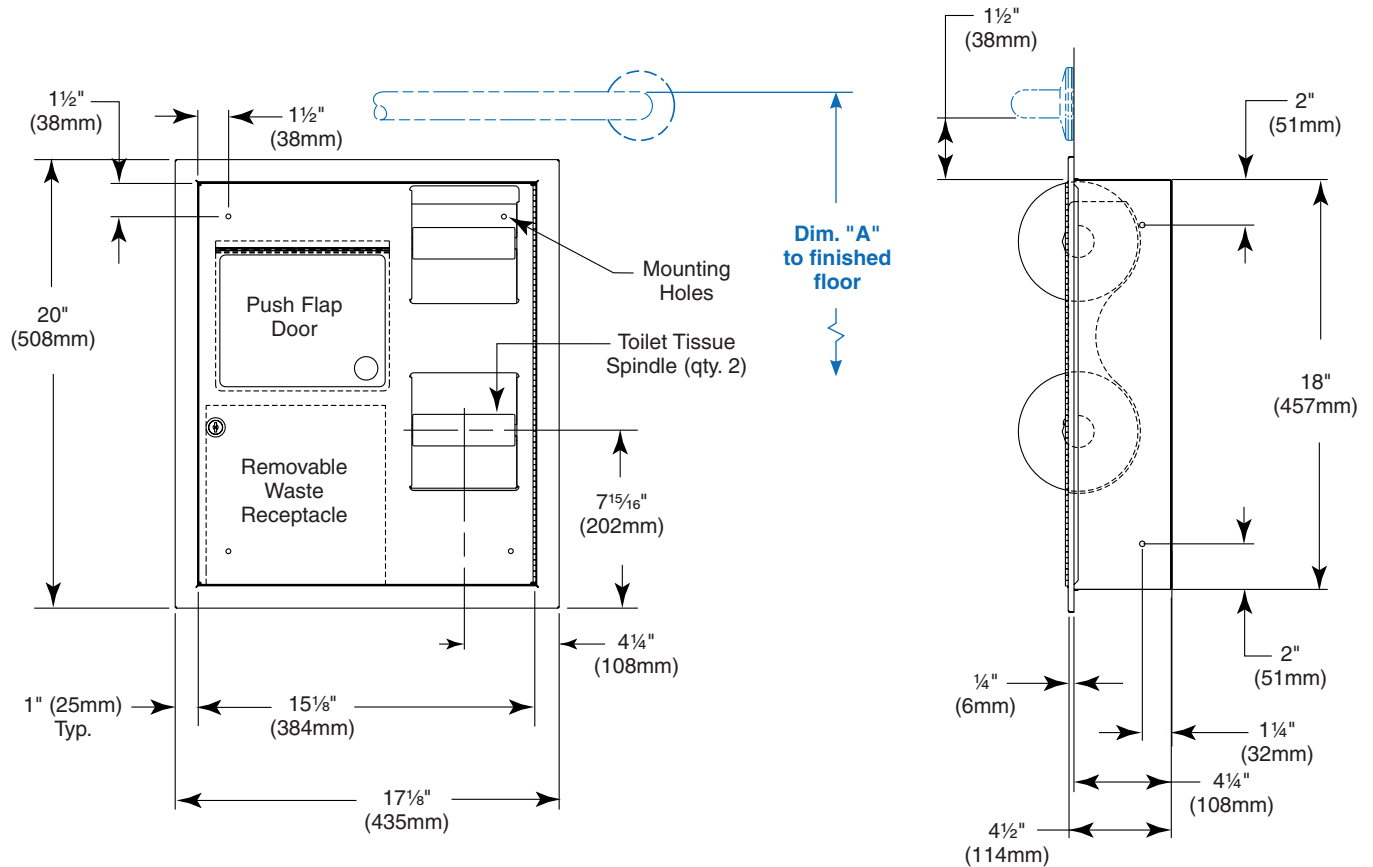
Overall dimensions: 17¼"W x 20"H x 4½"D.

ADA Compliant

- Consult local and national accessibility codes for proper installation guidelines.
- Conformity and compliance to local and national codes is the responsibility of the installer.



Dimensions



Grab bars must be ordered separately. To learn more about Bradley's wide variety of grab bar configurations, visit bradleycorp.com.

| Dim. "A" Key Surface: | For Dim. "A" | Top of Rough Wall Opening | Bottom of Rough Wall Opening | For Bottom Toilet Paper Opening Lower Lip @ Dim. "A" |
|--|--|---------------------------|------------------------------|--|
| Top of 1 1/2" grab bar (installed with 1 1/2" clearance) to finished floor | Not Applicable | 37" (940mm) | 18 3/4" (476mm) | 19" (483mm) |
| | 36" (914mm) | 33" (838mm) | 14 3/4" (375mm) | 15" (381mm) |
| Rough wall opening: | | | | |
| Surface-Mount: | No rough opening, overall dimensions 15 3/8" (384mm) Wide x 18" (457mm) High x 4 1/2" (114mm) Deep | | | |
| Recessed: | 15 3/8" (391mm) Wide x 18 1/4" (464mm) High x 4 1/4" (108mm) Deep | | | |
| Semi-Recessed: | 15 3/8" (391mm) Wide x 18 1/4" (464mm) High x 3 1/4" (83mm) Deep | | | |